



Centrifugal Direct-Drive Upblast Exhaust Ventilators

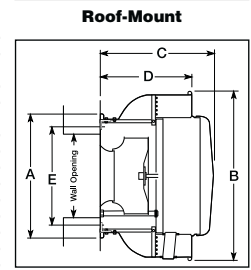
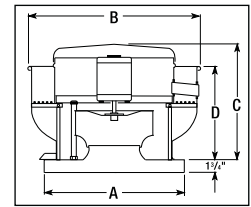
- Aluminum, backward-inclined wheel
- 1-piece rolled aluminum windband fully welded to base
- Motor, drive frame, and blower wheel isolated from mounting base
- Motor compartment isolated from contaminated air
- NEMA 1 junction box in motor enclosure (Hazardous units have NEMA 7 & 9 disconnect switch)
- UL and C-UL Listed (Motor only UL Listed for Class I Groups C & D, and Class II Groups F & G for hazardous location units)

Note: Additional sizes available on Grainger.com®. Speed controllers available for 115V units only. For kitchen application, check with local code authorities for minimum duct velocities. Do not use dampers in any kitchen application. NFPA 96.

Variable-Speed—Potentiometer dial is mounted on motor; no need to wire a speed control. Units feature energy-efficient EC motors which allow up to 80% useable turndown. UL 762 Listed Restaurant Exhaust Appliances (YZHW).

3-Speed—Speed controllable on any RPM providing 30% useable turndown. UL 705 Listed for Power Ventilators.

1-Speed—UL 762 Listed Restaurant Exhaust Appliances (YZHW), except hazardous units.



Roof-Mount Item No.	Wheel Dia. (in.)	Roof-Mount Dimensions (in.)				RECOMMENDED ROOF CURBS				Wheel Dia. (in.)	Wall-Mount Dimensions (in.)				
		A	B	C	D	Fixed Item No.	Adj. Item No.	Fixed Item No.	Adj. Item No.		A	B	C	D	E
48C178*	8 1/4	17	18 1/2	13 1/2	11 1/2	—	—	5E1J2	2ZV82	8 1/4	14 3/4	18 3/4	13 1/2	11 1/2	11 3/4
4HZ32*, 4HZ33*, 5DVN6*, 5DVN8*	8 1/4	19	18 3/4	13 1/2	11 1/2	—	—	2RB75	2ZV82	8 1/4	14 3/4	18 3/4	13 1/2	11 1/2	11 3/4
48C179*	11	19	21	13 3/4	11 1/2	—	—	2RB75	2ZV82	11	18 1/2	21	13 3/4	11 1/2	15
5DVP0*, 5DVP2*, 5DVP4*, 48C179*	11	19	21	13 3/4	11 1/2	4HX54	4HX61	2RB75	2ZV82	11	17 1/2	21	13 3/4	11 1/2	15
5DVP6*	11	19	21	15 1/4	13 3/4	4HX54	4HX61	2RB75	2ZV82	11	17 1/2	21	15 1/4	13 3/4	15
4HZ36, 4HZ37	11	19	24 1/2	22	17 1/2	4HX54	4HX61	2RB75	2ZV82	11	19 1/2	24 1/2	22	17 1/2	16 1/2
4HZ40, 4HZ41, 5DVR2	11	22	24 1/2	22	17 1/2	4HX55	4HX61	2RB76	2ZV82	11	19 1/2	24 1/2	22	17 1/2	16 1/2
48C180	12 1/2	19	24 1/2	28 1/4	17 1/2	4HX54	4HX61	2RB75	2ZV82	12 1/2	19 1/2	24 1/2	28 1/4	17 1/2	16 1/2
5DVP8	12 1/2	22	24 1/2	23 3/4	17 1/2	4HX55	4HX61	2RB76	2ZV82	12 1/2	19 1/2	24 1/2	23 3/4	17 1/2	16 1/2
48C181	13 1/4	19	24 1/2	28 1/4	17 1/2	4HX54	4HX61	2RB75	2ZV82	13 1/4	19 1/2	24 1/2	28 1/4	17 1/2	16 1/2
4HZ44, 4HZ45	13 1/4	19	24 1/2	23 3/4	17 1/2	4HX55	4HX61	2RB76	2ZV82	13 1/4	19 1/2	24 1/2	23 3/4	17 1/2	16 1/2
4HZ48, 4HZ49, 5DVR3	14 3/4	26	28 1/2	24 3/4	19 3/4	4HX56	4HX61	2RB77	2ZV83	14 3/4	22 1/2	28 1/2	24 3/4	19 3/4	19 3/4
4HZ52, 4HZ53, 5DVR4, 6KWH7	16 1/2	26	28 1/2	27 1/2	19 3/4	4HX56	4HX62	2RB77	2ZV83	16 1/2	22 1/2	28 1/2	24 3/4	19 3/4	19 3/4
48C182	18 1/2	30	35 3/8	28 3/4	21	4HX57	—	2RB79	2ZV83	18 1/2	27 3/4	35 3/8	28 3/4	21	25
4HZ56, 4HZ57, 6KWH8	18 1/2	30	35 3/8	28 3/4	21	4HX57	4HX62	2RB79	2ZV83	18 1/2	27 3/4	35 3/8	28 3/4	21	25
5DVR0	21 1/4	30	35 3/8	28 3/4	21	4HX57	4HX62	2RB79	2ZV83	21 1/4	27 3/4	35 3/8	28 3/4	21	25

Wheel Dia. (in.)	CFM Air Delivery @ Static Pressure Shown**	0.000"	0.125"	0.250"	0.375"	0.500"	0.750"	1.000"	Motor HP	Motor RPM	Max. Operating Amps	Volts 60 Hz	Max. BHP	Speed Control	Sones @ SP @ 5 ft. #	ROOF-MOUNT Item No.	WALL-MOUNT Item No.	Price
Variable-Speed, For Contaminated Air with Inlet Temps. up to 300°F																		
8 1/4	472	413	355	289	199	—	—	—	1/2	1725	—	115	.06	43Y140	6.1	48C178	48C183	688.50
8 1/4	312	222	—	—	—	—	—	—	1/2	1140	Variable	115	.02	—	—	—	—	—
8 1/4	235	95	—	—	—	—	—	—	1/2	860	—	115	.01	—	—	—	—	—
11	903	842	782	722	652	420	—	—	1/2	1725	—	115	.12	43Y140	9.4	48C179	48C184	764.00
11	596	505	395	—	—	—	—	—	1/2	1140	Variable	115	.04	—	—	—	—	—
11	450	324	—	—	—	—	—	—	1/2	860	—	115	.02	—	—	—	—	—
11	1468	1422	1373	1315	1255	1129	970	—	1/4	1725	3.9	115	0.09	43Y140	12.5	5DVR2	6KWH9	1,216.00
11	970	897	806	707	—	—	—	—	1/4	1140	—	115	0.09	—	6.5	—	—	—
11	732	625	481	—	—	—	—	—	1/4	860	—	115	0.04	—	0.6	—	—	—
12 1/2	2037	1979	1923	1869	1816	1710	1571	—	1/2	1725	—	115	.48	43Y140	16.7	48C180	48C185	1,243.00
12 1/2	1346	1261	1180	1091	981	—	—	—	1/2	1140	Variable	115	.14	—	8.2	—	—	—
12 1/2	1015	905	781	681	—	—	—	—	1/2	860	—	115	.06	—	5.6	—	—	—
12 1/2	2366	2305	2244	2183	2122	1994	1838	—	3/4	1725	—	115	.17	43Y140	18.4	48C181	48C186	1,270.00
13 1/4	1564	1471	1379	1280	1144	—	—	—	3/4	1140	Variable	115	.16	—	11.8	—	—	—
13 1/4	1180	1057	914	675	—	—	—	—	3/4	860	—	115	.08	—	7.7	—	—	—
14 3/4	2808	2743	2671	2594	2509	2329	2110	—	3/4	1550	—	115	0.72	43Y140	17.5	5DVR3	6KWJ0	1,554.00
14 3/4	2355	2277	2186	2086	1979	1717	1269	—	3/4	1300	—	115	0.43	—	12.8	—	—	—
14 3/4	1902	1800	1680	1540	1372	—	—	—	3/4	1050	—	115	0.22	—	9.8	—	—	—
16 1/2	3277	3161	3035	2896	2745	2421	1983	—	3/4	1140	—	115	0.58	43Y140	14.8	5DVR4	6KWJ1	1,621.00
16 1/2	2472	2315	2126	1918	1680	—	—	—	3/4	860	5.5	115	0.25	—	9.9	—	—	—
16 1/2	1581	1303	—	—	—	—	—	—	3/4	550	—	115	0.07	—	—	—	—	—
18 1/2	3778	3625	3486	3362	3190	2738	—	—	1	1000	—	115	.63	43Y140	14.7	48C182	48C187	1,964.00
18 1/2	3249	3074	2922	2732	2474	—	—	—	1	860	Variable	115	.40	—	11.1	—	—	—
18 1/2	2815	2617	2448	2143	1763	—	—	—	1	745	—	115	.26	—	8.1	—	—	—
Variable Speed Control																		
Optional Adjustable Speed Controller. For Use with Variable Speed Ventilators on this page.																		
3-Speed, For General Clean Air with Inlet Air Temps. up to 130°F																		
8 1/4	197	164	128	—	—	—	—	—	1/60	1550	1.00/0.77/0.68	115	0.02	1DGV1	4.0	5DVN6	5DVN7	349.75
8 1/4	165	126	70	—	—	—	—	—	1/60	1300	—	115	0.02	—	2.5	—	—	—
8 1/4	133	81	—	—	—	—	—	—	1/60	1050	—	115	0.02	—	—	—	—	—
8 1/4	266	222	172	95	—	—	—	—	1/30	1550	—	115	0.03	1DGV1	4.1	4HZ32	4HZ34	403.50
8 1/4	223	170	97	—	—	—	—	—	1/30	1300	1.30/0.92/0.68	115	0.03	—	2.9	—	—	—
8 1/4	180	109	—	—	—	—	—	—	1/30	1050	—	115	0.03	—	—	—	—	—
8 1/4	424	359	291	204	—	—	—	—	1/25	1550	—	115	0.04	1DGV1	4.9	4HZ33	4HZ35	500.50
8 1/4	356	279	185	—	—	—	—	—	1/25	1300	1.58/1.40/0.88	115	0.04	—	3.4	—	—	—
8 1/4	287	188	—	—	—	—	—	—	1/25	1050	—	115	0.04	—	—	—	—	—
11	480	431	376	314	235	—	—	—	1/20	1550	—	115	0.05	1DGV1	7.2	5DVP0	5DVP1	566.50
11	403	343	272	173	—	—	—	—	1/20	1300	2.44/1.82/1.48	115	0.05	—	5.5	—	—	—
11	325	247	133	—	—	—	—	—	1/20	1050	—	115	0.05	—	4.2	—	—	—
11	1049	964	861	747	616	—	—	—	1/20	1550	—	115	0.05	1DGV1	8.5	5DVP6	5DVP7	658.00
11	880	774	641	484	199	—	—	—	1/20	1300	2.6/2.0/1.5	115	0.12	—	6.4	—	—	—
11	711	570	381	—	—	—	—	—	1/20	1050	—	115	0.12	—	4.5	—	—	—
1-Speed, Single Phase, For Contaminated Air with Inlet Temps. up to 300°F																		
11	780	656	502	294	—	—	—	—	1/2	1140	2.7	115	0.06	1DGV1	8.3	4HZ36	4HZ38	666.50
11	1180	1094	1017	929	824	586	—	—	1/4	1725	5.0	115	0.20	1DGV2	13.0	4HZ37	4HZ39	764.00
11	970	897	806	707	—	—	—	—	1/4	1140	2.7	115	0.09	1DGV1	6.5	4HZ40	4HZ42	878.00
11	1468	1422	1373	1315	1255	1129	970	—	1/4	1725	5.0	115	0.29	1DGV2	12.5	4HZ41	4HZ43	960.00
12 1/2	2037	1979	1923	1869	1816	1710	1571	—	1/2	1725	7.5	115	0.48	1DGV3	16.7	5DVP8	5DVP9	1,011.00
12 1/2	1346	1261	1180	1091	981	—	—	—	1/2	1140	—	115	0.29	—	16.7	—	—	—
13 1/4	1180	1057	914	675	—	—	—	—	1/2	860	2.7	115	0.07	1DGV1	7.7	4HZ44	4HZ4	