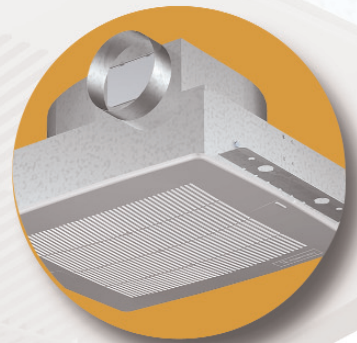


Ventilation Guide

DAY IN. DAY OUT.™



Ceiling and In-Line Exhaust Ventilators

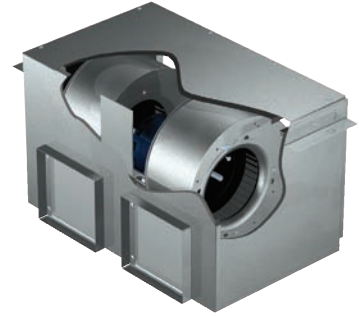
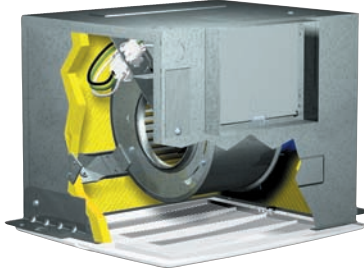
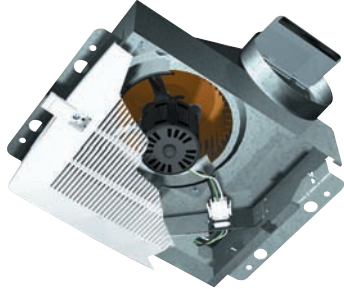


Available exclusively at



Ceiling and In-Line Exhaust Ventilators

Construction Features



Ceiling fans are designed to be mounted in bathrooms, meeting rooms; utility and office ceilings to exhaust or supply air. Select from either a Low Profile compact high volume performer, an Insulated ultra quiet performer or an In-Line to mount in a remote location.

Low Profile Ceiling Fan

The Low Profile ceiling fan is designed as a compact size for height restricted areas. These fans work well for ceilings with limited space above them. Their small size makes them easy to handle during installation. Their performance ranges from 90-150 CFM and as low as 1.9 sones.

GRILLE is an attractive design with securely fastened concealed attachment screws for rattle free operation.

UL/cUL LISTED for above bathtub/shower with GFCI branch protected circuit.

ALUMINUM BACKDRAFT DAMPER eliminates unwanted backdrafts.

OUTLETS are standard at 4 or 6 inch for quick and easy connections.

NON-INSULATED

INTERNAL ELECTRICAL ACCESS IS VERTICAL to eliminate drill holes.

POWER ASSEMBLY can be removed quickly for maintenance.

ELECTRICAL KNOCKOUTS will eliminate drill holes and are horizontal or vertical.

HOUSING is rigid with embossed galvanized steel and low profile for height restricted areas.

DISCONNECTS make servicing quick and safe.

JUNCTION BOX is large for easy electrical wiring.

MOUNTING BRACKETS for multiple installation conditions with fully adjustable brackets.

MOTORS have thermal overload protection and are compatible for use with speed controls.

Insulated Ceiling Fan

The Insulated ceiling fan is designed with acoustic insulation to absorb sound for quiet operation. Fan will perform at very low sound levels as low as .7 sones.

GRILLE is an attractive design with securely fastened concealed attachment screws for rattle free operation.

UL/cUL LISTED for above bathtub/shower with GFCI branch protected circuit.

ALUMINUM BACKDRAFT SPRING LOADED DAMPER eliminates rattling and unwanted backdrafts.

OUTLETS are both square and round and field rotatable from horizontal and vertical discharge.

INSULATION is acoustic to absorb sound.

ELECTRICAL ACCESS IS EXTERNAL which will save installation time with no need to remove the motor pack.

POWER ASSEMBLY can be removed quickly for maintenance or conversion from horizontal to vertical discharge.

ELECTRICAL KNOCKOUTS will eliminate drill holes and are horizontal or vertical.

HOUSING is rigid with embossed galvanized steel.

DISCONNECTS make servicing quick and safe.

JUNCTION BOX is large for easy electrical wiring.

MOUNTING BRACKETS for multiple installation conditions with fully adjustable brackets.

MOTORS have thermal overload protection and are compatible for use with speed controls.

In-Line Ceiling Fan

The In-Line fan is designed to mount in remote locations, removing the fan from the room, to ensure quiet operation in the ventilated room. Can be used for either supply or exhausting of general clean air.

ACCESS PANEL provides easy access to internal components when installed.

UL/cUL LISTED as electric fans.

ALUMINUM BACKDRAFT SPRING LOADED DAMPER eliminates rattling and unwanted backdrafts.

OUTLETS are both square and round and field rotatable from horizontal and vertical discharge.

INSULATION is acoustic to absorb sound.

ELECTRICAL ACCESS IS EXTERNAL which will save installation time with no need to remove the motor pack.

POWER ASSEMBLY can be removed quickly for maintenance or conversion from horizontal to vertical discharge.

ELECTRICAL KNOCKOUTS will eliminate drill holes and are horizontal or vertical.

HOUSING is rigid with embossed galvanized steel.

DISCONNECTS make servicing quick and safe.

JUNCTION BOX is large for easy electrical wiring.

MOUNTING BRACKETS for multiple installation conditions with fully adjustable brackets.

MOTORS have thermal overload protection and are compatible for use with speed controls.



Double Wide Fans

For applications requiring 700 cfm or greater.

Doublewide fans have two double width forward curved wheels, which are housed in separate scrolls, and driven by a single motor.

Ceiling and In-Line Exhaust Ventilators

Performance Table

Model	RPM	Volts	Amps	Watts	CFM Air Delivery @ Static Pressure Shown									
					0.000	0.100	0.125	0.250	0.375	0.500	0.625	0.750	1.000	
5AE68	700	115	0.65	50	CFM	102	92	88	75	59	45	30	-	-
					Sones	1.9	2.6	2.7	3.0	3.6	4.1	4.9	-	-
5AE69	1050	115	1.70	129	CFM	160	156	155	154	152	149	147	138	92
					Sones	3.0	3.3	3.3	3.7	4.3	4.5	5.0	5.3	5.8
5AE70	950	115	0.58	49	CFM	119	110	106	88	-	-	-	-	-
					Sones	1.3	1.2	1.2	1.6	-	-	-	-	-
5AE71	1400	115	1.30	113	CFM	216	197	192	167	133	-	-	-	-
					Sones	3.2	2.8	2.9	3.1	3.4	-	-	-	-
5AE72	900	115	0.43	48	CFM	247	225	220	196	172	142	105	67	-
					Sones	2.0	2.3	2.4	3.0	3.5	4.1	4.6	4.5	-
5AE73	1050	115	0.72	81	CFM	315	293	287	257	231	207	175	124	-
					Sones	3.2	3.3	3.3	3.6	3.9	4.1	4.5	5.5	-
5AE74	1350	115	1.34	135	CFM	410	395	391	368	345	325	307	279	-
					Sones	5.4	5.4	5.4	5.7	6.0	6.3	6.4	6.7	-
5AE75	1070	115	3.30	224	CFM	557	512	501	439	392	325	-	-	-
					Sones	6.0	5.7	5.6	5.5	5.4	4.7	-	-	-
5AE76	1100	115	3.20	350	CFM	757	729	723	700	679	649	613	560	396
					Sones	6.1	6.1	6.1	6.3	6.7	7.1	7.3	7.5	7.7
5AE77	1600	115	3.30	348	CFM	812	782	775	741	704	665	625	581	-
					Sones	10.2	10.2	10.2	9.9	9.5	9.5	9.4	9.4	-
5AE78	950	115	4.00	285	CFM	955	907	896	841	773	701	-	-	-
					Sones	5.2	5.7	5.8	6.1	6.2	6.2	-	-	-
5AE79	1095	115	6.30	420	CFM	1125	1059	1043	964	885	796	662	-	-
					Sones	7.2	7.0	6.9	6.8	6.6	6.5	6.5	-	-
5AE80	1450	115	7.40	786	CFM	1455	1414	1404	1353	1307	1262	1218	1174	-
					Sones	11.6	11.6	11.7	11.6	11.5	11.6	11.6	11.6	-
5AE81	1610	115	8.60	818	CFM	1607	1568	1558	1506	1449	1407	1369	1323	-
					Sones	12.4	12.1	12.1	12.0	11.9	12.8	14.1	15.9	-
5AE82	1100	115	7.80	735	CFM	2249	2175	2156	2044	1900	1701	1424	1114	-
					Sones	7.6	7.5	7.5	7.2	6.7	6.6	7.0	7.2	-
5AE83	1100	115/208-230	7.10	1330	CFM	3778	3653	3622	3460	3280	3091	2844	2551	1750
					Sones	8.8	8.4	8.4	8.0	7.8	7.6	7.5	7.8	8.5



Performance shown is for installation type B: Free inlet, Ducted outlet. Performance ratings include the effects of an inlet grille and backdraft damper in the airstream. Speed (RPM) shown is nominal. Performance is based on actual speed of test. The sound ratings shown are loudness values in fan sones at 5 ft. (1.5m) in a hemispherical free field calculated per AMCA Standard 301. Values are for installation type B: free inlet fan sone levels.

Dimensions and Specifications

Model	Figure	A	B	C	D	E	F	G	Grille Dia. (in.)	Unit Weight (lb.)	Recommended Speed Control
5AE68, 5AE69	1	13 1/2"	11 1/2"	7 1/8"	6"	1 1/2"	-	-	14" x 12"	10	4YC44
5AE70, 5AE71	2	13 1/4"	10 1/2"	10 1/2"	6"	8"	-	-	14" x 12"	17	4YC44
5AE72, 5AE73, 5AE74	2	14"	11 1/2"	11 1/2"	8"	8"	-	-	14" x 12"	24	4YC44
5AE75	2	18"	14 1/2"	14 1/2"	8"	8"	-	-	19" x 16"	31	4YC46
5AE76	3	23 3/8"	11 1/2"	11 1/2"	19 1/2"	8"	-	-	25" x 13 1/2"	34	4YC46
5AE77	2	18"	14 1/2"	14 1/2"	10"	8"	-	-	19" x 16"	34	4YC46
5AE78	3	23 3/8"	14 1/2"	14 1/2"	18 1/2"	8"	-	-	25" x 16"	56	4YC46
5AE79, 5AE80, 5AE81	3	23 3/8"	14 1/2"	14 1/2"	18 1/2"	8"	-	-	25" x 16"	56	4YC45
5AE82	4	35"	14 1/2"	14 1/2"	28"	6"	32 3/4"	13"	-	68	4YC45
5AE83	4	45 1/2"	16 1/2"	16 1/2"	40"	11"	43"	14"	-	122	-

All dimensions are in inches.

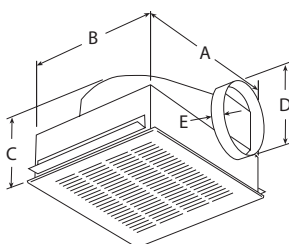


Figure 1

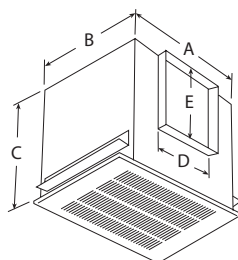


Figure 2

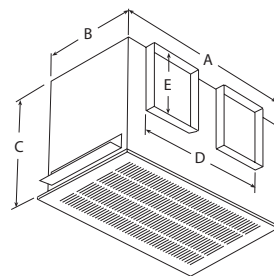


Figure 3

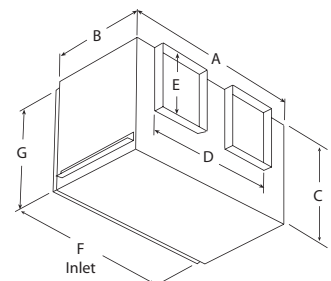


Figure 4

Ceiling and In-Line Exhaust Ventilators

Fan Sizing Chart for Bathrooms, Offices, Classrooms, etc.

Area Sq. Ft.*	Static Pressure							
	0.100	0.125	0.250	0.375	0.500	0.625	0.750	1.000
50	5AE68	5AE68	5AE68	5AE68	5AE69	5AE69	5AE69	5AE69
	5AE70	5AE70	5AE70	5AE72	5AE72	5AE72	5AE72	
60	5AE68	5AE68	5AE68	5AE69	5AE69	5AE69	5AE69	5AE69
	5AE70	5AE70	5AE70	5AE71	5AE72	5AE72	5AE72	
70	5AE68	5AE68	5AE68	5AE69	5AE69	5AE69	5AE69	5AE69
	5AE70	5AE70	5AE70	5AE71	5AE72	5AE72	5AE73	
80	5AE68	5AE68	5AE69	5AE69	5AE69	5AE69	5AE69	5AE69
	5AE70	5AE70	5AE70	5AE71	5AE72	5AE72	5AE73	
90	5AE69	5AE69	5AE69	5AE69	5AE69	5AE69	5AE69	5AE76
	5AE70	5AE70	5AE71	5AE71	5AE72	5AE72	5AE73	
100	5AE69	5AE69	5AE69	5AE69	5AE69	5AE69	5AE69	5AE76
	5AE70	5AE71	5AE71	5AE71	5AE72	5AE73	5AE73	
140	5AE69	5AE69	5AE69	5AE69	5AE69	5AE69	5AE74	5AE76
	5AE71	5AE71	5AE71	5AE72	5AE73	5AE73		
150	5AE71	5AE71	5AE71	5AE72	5AE73	5AE73	5AE74	5AE76
175	5AE71	5AE71	5AE72	5AE73	5AE73	5AE74	5AE74	5AE76
200	5AE72	5AE72	5AE73	5AE73	5AE74	5AE74	5AE74	5AE76
250	5AE73	5AE73	5AE74	5AE74	5AE74	5AE74	5AE74	5AE76
300	5AE74	5AE74	5AE74	5AE74	5AE75	5AE76	5AE76	5AE76
350	5AE74	5AE74	5AE75	5AE75	5AE76	5AE76	5AE76	-
400	5AE75	5AE75	5AE75	5AE76	5AE76	5AE76	5AE76	-
500	5AE76	5AE76	5AE76	5AE76	5AE76	5AE76	5AE76	-
600	5AE76	5AE76	5AE76	5AE76	5AE77	5AE79	5AE80	-
650	5AE77	5AE77	5AE77	5AE77	5AE79	5AE80	5AE80	-
700	5AE77	5AE77	5AE78	5AE78	5AE79	5AE80	5AE80	-
750	5AE78	5AE78	5AE78	5AE79	5AE80	5AE80	5AE80	-
800	5AE78	5AE78	5AE79	5AE79	5AE80	5AE80	5AE80	-
900	5AE79	5AE79	5AE79	5AE80	5AE80	5AE80	5AE80	-
1000	5AE80	5AE80	5AE80	5AE80	5AE80	5AE80	5AE80	-
1200	5AE80	5AE80	5AE80	5AE80	5AE81	5AE81	5AE81	-
1300	5AE80	5AE80	5AE81	5AE81	5AE81	-	-	-
1400	5AE81	5AE81	5AE81	-	-	-	-	-

* Area in Square Feet is room length X width assuming 8 foot ceilings.

* If cathedral ceilings, if 10-12 ft. ceiling = room length X width by 1.25 and for 12-16 ft ceilings times by 1.5

Dayton®

Reliability, dependability, availability. They all add up to a better value, at a price to fit your budget.

Better Reliability.

You can count on Grainger for:

1. Heavy-duty component construction
2. Demanding tolerances that meet tough industry standards
3. Design functionality to fit commercial through industrial applications

Better Dependability.

Whatever you're faced with today, a Dayton product is up for the task. Dayton products are reviewed every year through a continuous improvement process in order to provide dependability.

Better Availability.

Downtime kills productivity. When you need it fast, Dayton products are readily available exclusively through your Grainger network.

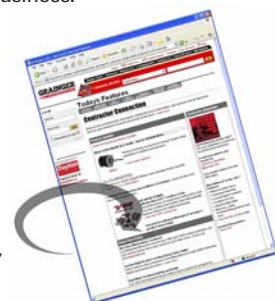
Ventilation manuals are available online

Help is just a click away – Download useful HVAC/R installation and maintenance guides of Grainger's PRVs, exhaust fans, blowers, heaters and agricultural fans for quick and easy reference. **See grainger.com/dayton**

Register at Grainger.com/contractor

Visit grainger.com/contractor for information, technical articles and industry links to keep you better informed on trade issues and how Grainger can help grow your business.

DAY IN. DAY OUT.™



Disclaimer: Dayton Electric Manufacturing Co. has made a diligent effort to illustrate and describe the products in this literature accurately; however, such illustrations and descriptions are for the sole purpose of identification, and do not express or imply a warranty that the products are merchantable, or fit for a particular purpose, or that the products will necessarily conform to the illustrations or descriptions.

Product Suitability: Many states and localities have codes and regulations governing sales, construction, installation, and/or use of products for certain purposes, which may vary from those in neighboring areas. While Dayton attempts to assure that its products comply with such codes, it cannot guarantee compliance, and cannot be responsible for how the product is installed or used. Before purchase and use of a product, please review the product application, and national and local codes and regulations, and be sure that the product, installation, and use will comply with them.