



Manual & Remote Balancing Dampers

Where does this get installed?

They are typically installed in a duct serving a single zone or room to allow the air volume to that space to be constant. Usually the duct is above the ceiling grilles or diffusers.

Types:

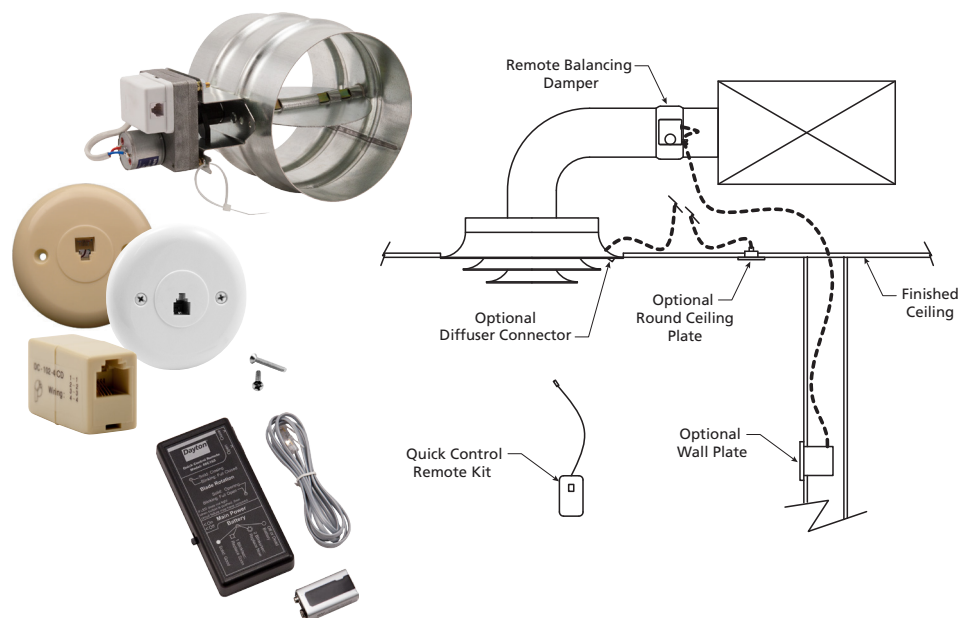
There are two types of balancing dampers:

- *Manual balancing dampers* – Blades are set and locked in place by mechanical means usually a manual quadrant handle that locks into position by means of tightening a wing-nut on a bolt.
- *Remote Balancing Dampers* – Capable of changing the blade position from a remote location by means of a remote control device. (These are typically used behind sheetrock ceilings where the damper is not accessible)

Installation Questions/ Troubleshooting:

There are not normally questions associated with the installation/ operation of these dampers as the application is very simple and self-explanatory.

Remote control device battery indicator signals battery status.



Purpose:

Balancing dampers are made with a single purpose to have the blades set and locked at a single angle/position only allowing one set amount of airflow through the damper/ duct to keep an area or room at a constant level of airflow.



Ongoing Maintenance Requirements:

There is almost no maintenance required other than keeping debris out of the airstream.