

## for the FANS

August 2009 — [www.solutionsforair.com](http://www.solutionsforair.com)

Dayton® Products - *click on any Item No. below to see more information on [www.solutionsforair.com](http://www.solutionsforair.com)*

### Severe-Duty Ventilation — Severe Wind Application



These exhaust ventilators are an integral component of a commercial kitchen ventilation system. These fans must be able to withstand high temperatures, grease laden air, and the abuse taken during regular system cleanings. Depending on the type of cooking, NFPA requires that kitchen ventilation systems be cleaned frequently—quarterly, and sometimes even monthly—for applications such as solid fuel cooking and charbroiling, among others. During a typical cleaning, the fan will be subjected to acids, scraping, and high pressure washers. Over time, these cleanings can take a toll on a fan. To better stand up to these severe grease applications, turn to Dayton's Severe-Duty Centrifugal Belt-Drive Upblast Exhaust Ventilators.

See page 3746  
in Catalog 400

- Severe wind applications up to 150 mph when installed with severe-duty roof curb
- Severe grease exhaust applications
- AMCA Sound & Air Certified
- Polyurethane coating on housing
- Nonstick coating on wheel
- Clean-out port provides easy duct access and is required by NFPA in kitchen application

Wheel Dia.	CFM Air Delivery @ Static Pressure Shown				Motor HP	Fan RPM	Sones @ 0.500" @ 5 Ft.	Max BHP	FANS COMPLETE WITH DRIVE PACKAGE		FAN WITHOUT MOTOR & DRIVE PACKAGE Item No.
	0.000"	0.250"	0.500"	1.000"					Open Dripproof 1-Phase Motor 115/230V, 60 Hz	Open Dripproof 3-Phase Motor 208-230/460V, 60 Hz	
<b>Severe-Duty</b>											
14 3/4"	2001	1793	1515	—	1/4	1105	10.0	0.26	<b>7YR42</b>	—	<b>1DYK4</b>
	2192	2006	1773	—	1/3	1210	11.2	0.34	<b>7YR43</b>	—	
	2518	2362	2174	1643	1/2	1390	12.9	0.52	<b>7YR44</b>	<b>7YR64</b>	
	2889	2757	2602	2225	3/4	1595	16.1	0.79	<b>7YR45</b>	<b>7YR65</b>	
	3125	3005	2865	2539	1	1725	24	1.00	<b>7YR46</b>	<b>7YR66</b>	
16 1/2"	2515	2177	1744	—	1/4	875	9.7	0.26	<b>7YR47</b>	—	<b>1DYK5</b>
	2774	2477	2109	—	1/3	965	10.8	0.35	<b>7YR48</b>	—	
	3191	2941	2641	1770	1/2	1110	13.5	0.54	<b>7YR49</b>	<b>7YR67</b>	
	3636	3426	3172	2583	3/4	1265	16.8	0.79	<b>7YR50</b>	<b>7YR68</b>	
	3996	3806	3584	3078	1	1390	19.9	1.05	<b>7YR51</b>	<b>7YR69</b>	
18 1/2"	2815	2448	1763	—	1/4	745	7.1	0.26	<b>7YR52</b>	—	<b>1DYK6</b>
	3098	2759	2257	—	1/3	820	9.0	0.35	<b>7YR53</b>	—	
	3551	3243	2879	—	1/2	940	12.4	0.52	<b>7YR54</b>	<b>7YR70</b>	
	4061	3786	3554	2652	3/4	1075	15.5	0.78	<b>7YR55</b>	<b>7YR71</b>	
	4477	4224	4005	3336	1	1185	16.5	1.04	<b>7YR56</b>	<b>7YR72</b>	
	5138	4913	4710	4232	1 1/2	1360	21	1.58	<b>7YR57</b>	<b>7YR73</b>	
	5648	5443	5224	4921	2	1495	26	2.10	—	<b>7YR74</b>	
21 1/4"	3403	2675	—	—	1/4	605	—	0.26	<b>7YR58</b>	—	<b>1DYK7</b>
	3740	3096	2073	—	1/3	665	7.0	0.35	<b>7YR59</b>	—	
	4275	3718	3048	—	1/2	760	9.4	0.52	<b>7YR60</b>	<b>7YR75</b>	
	4922	4439	3922	—	3/4	875	13.5	0.79	<b>7YR61</b>	<b>7YR76</b>	
	5400	4958	4508	3169	1	960	16.4	1.04	<b>7YR62</b>	<b>7YR77</b>	
	6187	5798	5421	4529	1 1/2	1100	21	1.57	<b>7YR63</b>	<b>7YR78</b>	
	6806	6451	6108	5350	2	1210	22	2.09	—	<b>7YR79</b>	
<b>High Pressure Severe-Duty</b>											
14 3/4"	—	—	1016	798	1/4	1465	14.2	0.26	<b>7YR80</b>	—	<b>1DYK8</b>
	—	—	1146	965	1/3	1605	15.2	0.34	<b>7YR81</b>	—	
	—	—	1363	1219	1/2	1845	17.0	0.52	<b>7YR82</b>	<b>7YR99</b>	
	—	—	1592	1473	3/4	2110	19.8	0.78	<b>7YR83</b>	<b>7YT00</b>	
16 1/2"	—	—	1487	—	1/4	1065	11.0	0.26	<b>7YR84</b>	—	<b>1DYK9</b>
	—	—	1697	1252	1/3	1165	12.8	0.34	<b>7YR85</b>	—	
	—	—	2053	1724	1/2	1340	14.4	0.52	<b>7YR86</b>	<b>7YT01</b>	
	—	—	2433	2165	3/4	1535	18.1	0.79	<b>7YR87</b>	<b>7YT02</b>	
	—	—	2722	2488	1	1690	21	1.05	<b>7YR88</b>	<b>7YT03</b>	
18 1/2"	—	—	1799	—	1/4	845	9.5	0.26	<b>7YR89</b>	—	<b>1DYL1</b>
	—	—	2104	—	1/3	925	10.8	0.35	<b>7YR90</b>	—	
	—	—	2581	1933	1/2	1065	13.8	0.53	<b>7YR91</b>	<b>7YT04</b>	
	—	—	3063	2626	3/4	1215	15.0	0.79	<b>7YR92</b>	<b>7YT05</b>	
	—	—	3441	3075	1	1335	18.7	1.04	<b>7YR93</b>	<b>7YT06</b>	
	—	—	4035	3728	1 1/2	1530	24	1.57	<b>7YR94</b>	<b>7YT07</b>	
21 1/4"	—	—	4495	4226	2	1685	27	2.09	—	<b>7YT08</b>	<b>1DYL2</b>
	—	—	2779	—	1/2	880	10.5	0.52	<b>7YR95</b>	<b>7YT09</b>	
	—	—	3397	2637	3/4	1010	14.5	0.79	<b>7YR96</b>	<b>7YT10</b>	
	—	—	3851	3242	1	1110	16.9	1.04	<b>7YR97</b>	<b>7YT11</b>	
	—	—	4558	4055	1 1/2	1270	22	1.56	<b>7YR98</b>	<b>7YT12</b>	
	—	—	5110	4674	2	1400	24	2.09	—	<b>7YT13</b>	
	—	—	5943	5581	3	1600	29	3.13	—	<b>7YT14</b>	

### Recommended Roof Curbs

Required in severe wind applications or ratings will not apply. Straight-sided 24" high heavy-gauge steel construction. If used in kitchen application, duct must be fire-wrapped to meet NFPA 96.

For Fan Wheel Dia.	Fixed Nonventilated Item No.
14 3/4" & 16 1/2"	<b>2EUG8</b>
18 1/2" & 21 1/4"	<b>2EUG9</b>



### Recommended Grease Collector Boxes

Divert and collect heavy grease residue while protecting roof surface. Fasten directly to curb underneath ventilator. Includes connection from ventilator drain to grease box. No. 1RL34 meets NFPA 96 standards.

Type	Item No.
Small	<b>1RL34</b>
Large	<b>4HX78</b>



Performance certified is for installation type A: Free inlet, Free outlet. Power rating (BHP) does not include transmission losses. Performance ratings do not include the effects of appurtenances (accessories). The sound ratings shown are loudness values in fan sones at 5 ft. (1.5 m) in a hemispherical free field calculated per AMCA Standard 301. Values shown are for installation type A: Free inlet hemispherical sone levels. The AMCA Certified Ratings Seal applies to sone ratings only.

# NEWS...

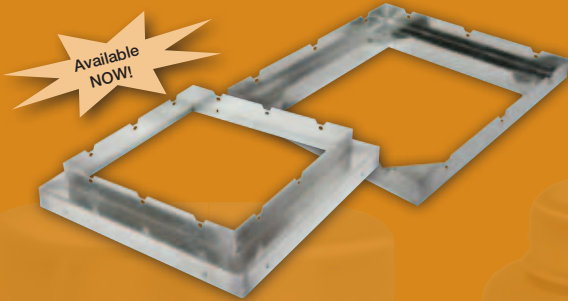
# Solutions For Air

Your Ventilation Information Resource

## for the FANS

August 2009 — [www.solutionsforair.com](http://www.solutionsforair.com)

★ New Dayton® Products - *click on any Item No. below to see more information on [www.solutionsforair.com](http://www.solutionsforair.com)*

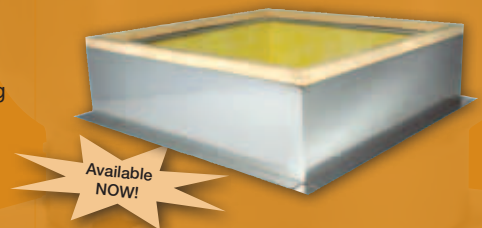


### Roof Curb Adaptors — NEW!

Allows an existing roof curb to be used when replacing a fan or ventilator. Designed to adapt a standard fan base dimension to the existing curb. Does not add height to the installation. Galvanized steel construction. Top and bottom flange surface is 2½".

### Nonventilated Roof Curbs — 14 NEW SIZES!

Designed for use in general exhaust applications. Flat mounting flange fastens directly to the roof deck before insulation is applied for weather tightness. Straight sided surface accommodates roofing material up the side of the curb and over the top for leakproof installation.



	Adapts to Fit Dayton		Item No.
	Fan Base Size	Roof Curb Size	
<b>Reducer</b>			
	19"	17"	<b>3AZK1</b>
	22	18	<b>3AZK2</b>
	22	20	<b>3AZK3</b>
	26	22	<b>3AZK4</b>
	30	26	<b>3AZK5</b>
	34	30	<b>3AZK6</b>
	46	42	<b>3AZK7</b>
<b>Increaser</b>			
	19"	21"	<b>3AZK8</b>
	22	26	<b>3AZK9</b>
	26	30	<b>3AZL1</b>
	30	34	<b>3AZL2</b>
	34	40	<b>3AZL3</b>
	40½	44½	<b>3AZL4</b>

Use with Dayton Ventilators	Item No.
<b>12" High Roof Curb</b>	
Having a 24½" Square Base	<b>3FLT5</b>
Having a 28½" Square Base	<b>3AZH7</b>
Having a 34½" Square Base	<b>3AZH8</b>
Having a 36" Square Base	<b>3AZH9</b>
Having a 39" Square Base	<b>3AZJ1</b>
Having a 40½" Square Base	<b>3AZJ2</b>
Having a 45" Square Base	<b>3AZJ3</b>
Having a 46½" Square Base	<b>3AZJ4</b>
Having a 50½" Square Base	<b>3AZJ5</b>
Having a 54½" Square Base	<b>3AZJ6</b>
Having a 57" Square Base	<b>3AZJ7</b>
Having a 60½" Square Base	<b>3FLT6</b>
Having a 66½" Square Base	<b>3AZJ8</b>
Having a 72½" Square Base	<b>3AZJ9</b>

## for the FANS

August 2009 — [www.solutionsforair.com](http://www.solutionsforair.com)

★ New Dayton® Products - *click on any Item No. below to see more information on [www.solutionsforair.com](http://www.solutionsforair.com)*

### Assembled Centrifugal Belt-Drive Upblast Exhaust Ventilators — 13 NEW SIZES!

Designed for use in restaurants, schools, commercial, and industrial applications to exhaust contaminated air from kitchen range hoods, up and away from the roof. Leakproof, spun aluminum construction features a fully rolled windband for increased stability.



- UL 762 Listed Restaurant Exhaust Equipment
- AMCA Sound & Air Certified
- Max. inlet air temperature: 300°F
- Aluminum, backward inclined, nonoverloading wheel design
- NEMA-1 junction box located in motor enclosure
- Air handling quality bearings meet min. L10-100,000 hours

Wheel Dia.	CFM Air Delivery @ Static Pressure Shown				Motor HP	Fan RPM	Sones @ 0.250" @ 5 Ft.		FANS COMPLETE WITH DRIVE PACKAGE, ASSEMBLED	
	0.250"	0.500"	1.000"	1.500"			Max BHP		Open Dripproof 1-Phase Motor 115/230V, 60 Hz	Open Dripproof 3-Phase Motor 208-220/440V, 60 Hz
14¾"	2362	2174	1643	—	1/2	1390	14.2	0.52	<b>3ATT8</b>	—
	3005	2865	2539	2085	1	1725	22	1.00	<b>3ATT9</b>	<b>3ATU1</b>
16½"	3426	3172	2583	—	3/4	1265	17.7	0.79	<b>3ATU2</b>	—
	3806	3584	3078	2394	1	1390	21	1.05	—	<b>3ATU3</b>
18½"	3786	3554	2652	—	3/4	1075	15.8	0.78	<b>3ATU4</b>	—
	4913	4710	4232	3537	1½	1360	22	1.58	<b>3ATU5</b>	<b>3ATU6</b>
21¼"	4958	4508	3169	—	1	960	17.7	1.04	<b>3ATU7</b>	—
	6451	6108	5350	4289	2	1210	23	2.10	—	<b>3ATU8</b>
24½"	7184	6615	5282	—	1½	845	18.6	1.57	<b>3ATU9</b>	—
	9107	8775	7766	6672	3	1050	31	3.00	—	<b>3ATV1</b>
30½"	14,266	13,788	12,614	11,191	5	905	32	5.21	—	<b>3ATV2</b>

Performance certified is for installation type A: Free inlet, Free outlet. Power rating (BHP) does not include transmission losses. Performance ratings do not include the effects of aperturancs (accessories). The sound ratings shown are loudness values in fan sones at 5 ft. (1.5 m) in a hemispherical free field calculated per AMCA Standard 301. Values shown are for installation type A: Free inlet hemispherical sone levels. The AMCA Certified Ratings Seal applies to sone ratings only.

### Assembled Centrifugal Belt-Drive Downblast Exhaust Ventilators — 4 NEW SIZES!

Designed to meet the general clean air exhaust requirements for industrial and commercial buildings. Features a fully rolled windband bead for increased stability and easy transport. Fresh outside air is drawn in under the motor cover to maximize motor life. UL/cUL 705 Listed.



- UL 705 Listed for Power Ventilators
- AMCA Sound & Air Certified
- Max. inlet air temperature: 180°F
- Aluminum, backward inclined, nonoverloading wheel design
- NEMA-1 junction box located in motor enclosure
- Air handling quality bearings meet min. L10-100,000 hours

Wheel Dia.	CFM Air Delivery @ Static Pressure Shown				Motor HP	Fan RPM	Sones @ 0.250" @ 5 Ft.		FANS COMPLETE WITH DRIVE PACKAGE, ASSEMBLED	
	0.000"	0.250"	0.500"	0.750"			Max BHP		Open Dripproof 1-Phase Motor 115/230V, 60 Hz	Open Dripproof 3-Phase Motor 208-220/440V, 60 Hz
14¾"	1994	1771	1490	—	1/4	1075	9.4	0.26	<b>3HFL6</b>	—
16¼"	3249	2943	2615	2198	1/2	1100	14.1	0.53	<b>3HFL7</b>	—
30½"	9719	8907	7952	6721	1½	600	14.9	1.55	<b>3HFL8</b>	—
36"	18,322	17,560	16,711	15,774	5	685	29	5.23	—	<b>3HFL9</b>

Performance certified is for installation type A: Free inlet, Free outlet. Power rating (BHP) does not include transmission losses. Performance ratings include the effects of a birdscreen in the airstream. The sound ratings shown are loudness values in fan sones at 5 ft. (1.5 m) in a hemispherical free field calculated per AMCA Standard 301. Values shown are for installation type A: Free inlet fan sone levels. The AMCA Certified Ratings Seal applies to sone ratings only.

# NEWS...

# Solutions For Air

Your Ventilation Information Resource

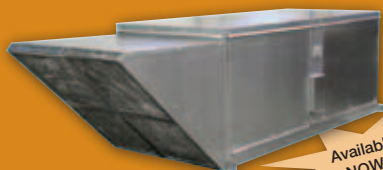
## for the FANS

August 2009 — [www.solutionsforair.com](http://www.solutionsforair.com)

★ New Dayton® Products - *click on any Item No. below to see more information on [www.solutionsforair.com](http://www.solutionsforair.com)*

### Direct Fired Make-Up Air Heaters — 3 NEW SIZES!

Designed to provide large volumes of tempered fresh air to commercial kitchens or industrial buildings. The direct gas burners are 92% efficient and operate on natural gas. Units constructed of 18-ga. galvanized steel with standard lifting lugs for easy installation.





Available NOW!

- ETL Listed for US and Canada
- Natural gas burners are 92% efficient
- Cast aluminum burners are capable of 25:1 turndown ratio
- Airflow volumes range from 100 to 4500 CFM
- Heating capacities of up to 400,000 BtuH

Wheel Dia.	CFM Air Delivery @ Static Pressure Shown				Motor HP	Blower RPM	Sones @ 0.250" @ 5 Ft.	Full Load Amps	Voltage	BtuH		Phase	RECOMMENDED ROOF CURBS		Item No.
	0.250"	0.500"	0.625"	0.750"						Input	Output		12" Fixed	12" Adj.	
12"	4500	4090	3840	3550	3	1132	20	33.0/16.5	115/208-230	400,000	368,000	1	<b>2RB78</b>	<b>2ZV83</b>	<b>3CCR7</b>
15	6780	6140	5810	5400	5	968	33.7	14.6-13.2/6.6	208-230/460	800,000	736,000	3	<b>2RB82</b>	<b>2ZV85</b>	<b>3CCR8</b>
18	8790	8070	7500	6970	5	832	26.8	14.6-13.2/6.6	208-230/460	800,000	736,000	3	<b>2RB82</b>	<b>2ZV85</b>	<b>3CCR9</b>

### Replacement Motors — NEW!

Open Dripproof	
	<b>3RED7</b>
	<b>3RED8</b>

Explosion Proof Fan-Cooled	
	<b>3RED9</b>
	<b>3REE3</b>
	<b>3REE4</b>



## Solutions For Air

Your Ventilation Information Resource

**Research and Purchase**  
No Registration Required for [www.solutionsforair.com](http://www.solutionsforair.com) users!

For additional information on other Dayton products, visit [www.solutionsforair.com](http://www.solutionsforair.com) - Your Dayton Ventilation Information Resource. This website helps take the guesswork out of selecting the right product for your application, as well as provides you with a surplus of product information including product specifications, submittals, recommended accessories, troubleshooting guides, air performance and much more!

We offer selection tools to match our products with your specifications, including an application search, competitor cross reference and building cutaway. In addition, there is a Ventilation School section where we help to expand your knowledge on HVAC. Visit [SolutionsForAir.com](http://SolutionsForAir.com) today and we'll show you how fun and easy ventilation can be!