

NEWS...

Solutions For Air

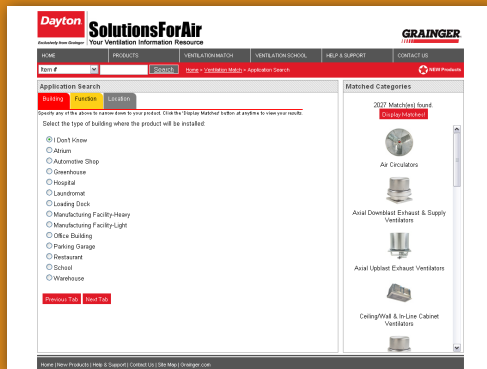
Your Ventilation Information Resource

for the FANS

November 2009 — www.solutionsforair.com

Ventilation Match — Find What You Need Quickly And Easily!

We provide you with various search tools to find specific Dayton ventilation products that will fit your needs. These search tools include:

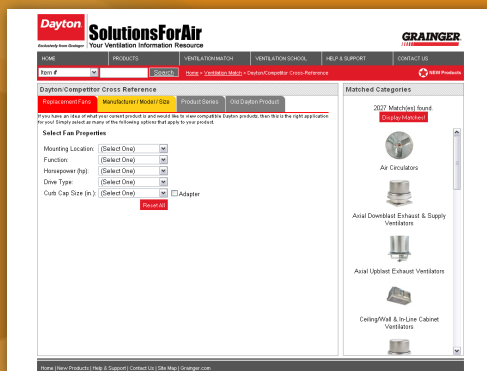


APPLICATION SEARCH

If you are not sure what you are looking for, but have an idea of where you need it or what you need it for, our 'Application Search' will present you with the products that match your needs based on your answers to a few simple questions.

Click through these three easy steps:

1. Building — Select the type of building where the product will be installed.
2. Function — What function should the product perform?
3. Location — Where will the ventilation equipment be installed?



DAYTON/COMPETITOR X-REFERENCE

Interested in comparing a competitor's brand? Looking to replace an old fan? No problem! Our 'Dayton/Competitor Cross-Reference' application will search your listed product (be it ours or a competitor's brand) or product specifications, and provide you with our matching products and their specifications to help you make the right choice!

Four ways to reference what you're looking for:

1. Replacement Fans — Select Fan Properties
2. Manufacture/Model/Size — Select by Manufacturer / Model / Size
3. Product Series — Select by Product Series
4. Old Dayton Product — Select by Old Dayton Product Number

More details starting on page 2!

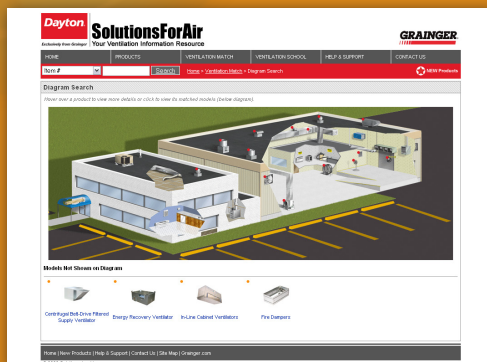


DIAGRAM SEARCH

Know what a product looks like but not what it's called? Have an idea of where your product should go on a building? Our 'Diagram Search' application has just the thing to help you with your product selection process. Our products are placed over a building model with images and descriptions of what they do.

Hover over a product to view more details or click to view its matched models.

for the FANS

November 2009 — www.solutionsforair.com

Ventilation Match — Replacement Fans!

- Five easy properties to narrow your results
- Quick reset button: reset a single property or reset all
- Dayton items that meet your selection criteria are returned



Select properties that relate to your existing product in any order from our drop down lists. The more provided, the better your results will be.

Mounting Location: (Select One)
Function: (Select One)
Horsepower (hp): (Select One)
Drive Type: (Select One)
Curb Cap Size (in.): (Select One) Adapter



Matched Categories

2027 Match(es) found.

Mounting Location: Roof
Function: Supply Air
Horsepower (hp): (Select One)
Drive Type: Direct Drive
Curb Cap Size (in.): (Select One) Adapter



Matched Categories

12 Match(es) found.

Reset a property and change your selection at anytime, or, start over by selecting the red 'Reset All' button. Open to using a roof curb adapter? Select the check box. This feature will return more products available for your application that will adapt to fit your existing roof curb.

Mounting Location: Roof
Function: Supply Air
Horsepower (hp): 1
Drive Type: (Select One)
Curb Cap Size (in.): 34 Adapter



Matched Categories

1 Match(es) found.

Mounting Location: Roof
Function: Supply Air
Horsepower (hp): 1
Drive Type: (Select One)
Curb Cap Size (in.): 34 Adapter



Matched Categories

8 Match(es) found.

NEWS...

Solutions For Air

Your Ventilation Information Resource

for the FANS

November 2009 — www.solutionsforair.com

Select the red 'Display Matches' button to view products that best fit your application. Still too many choices? Don't worry, two tabs are available to further narrow your results — Basic and Advanced. Use selections in these tabs and notice your results adjust. Not sure what some terms are referencing? Click the [?] next to the term to learn. Don't worry about losing your selections, a new browser window will open up.

Narrow Your Search Basic | **Advanced** Reset All

8 Matches found.

- Assembled [?]
 - FALSE (7)
 - TRUE (1)
- Building Type [?]
 - Automotive Shop (5)
 - Hospital (5)
 - Manufacturing Facility-Heavy (3)
 - Manufacturing Facility-Light (3)
 - Office Building (5)
 - Restaurant (4)
 - School (5)
 - Warehouse (3)
- Curb Cap Size [?]
 - 34 in (1)
 - 34 1/2 in (7)
- Damper Width x Damper Height [?]
 - 30 x 30 in (3)
- Drive Package Description [?]
 - Drives Packaged Separately (7)
- Drive Type [?]
 - Belt Drive (7)
 - Direct Drive (1)
- Height [?]
 - 17 1/2 in (1)
 - 38 in (3)
- Impeller Diameter (Nom.) [?]
 - 13 in (2)
 - 15 in (2)
 - 24 in (1)
 - 30 in (3)
- Impeller Material [?]
 - Galvanized Steel (3)
 - Steel (5)
- Impeller Type [?]

Results Search (Reset)

Item Number	Description	Details	Compare
4YC63	Direct-Drive Downblast Supply [Power Roof Ventilators]	Impeller Diameter: 24 in CFM: 3,066 to 5,742 ft3/min	<input type="checkbox"/>
7CH42	Belt-Drive Roof Supply [Power Roof Ventilators]	Impeller Diameter: 30 in CFM: 6,901 to 8,628 ft3/min	<input type="checkbox"/>
7CH43	Belt-Drive Roof Supply [Power Roof Ventilators]	Impeller Diameter: 30 in CFM: 6,901 to 8,628 ft3/min	<input type="checkbox"/>
7CH44	Belt-Drive Roof Supply [Power Roof Ventilators]	Impeller Diameter: 30 in CFM: 6,901 to 8,628 ft3/min	<input type="checkbox"/>
7D503	Filtered Supply [Power Roof Ventilators]	Impeller Diameter: 13 1/4 in CFM: 2,363 to 3,801 ft3/min	<input type="checkbox"/>

1 2



If you have a few products that you're interested in, select the compare check box on up to three items. Click the red 'Compare' button to view their differences.

Narrow Your Search Basic | **Advanced** Reset All

3 Matches found.

- Voltage [?]
 - [x] 115/208-230
- Motor Enclosure [?]
 - [x] Open Dripproof
- Building Type [?]
 - Automotive Shop (2)
 - Hospital (2)
 - Manufacturing Facility-Heavy (1)
 - Manufacturing Facility-Light (1)
 - Office Building (2)
 - Restaurant (2)
 - School (2)
 - Warehouse (1)
- Damper Width x Damper Height [?]
 - 30 x 30 in (1)
- Height [?]
 - 38 in (1)
- Impeller Diameter (Nom.) [?]
 - 13 in (1)
 - 15 in (1)
 - 30 in (1)

Results Search (Reset) > Voltage: 115/208-230 [x] > Motor Enclosure: Open Dripproof [x]

Item Number	Description	Details	Compare
7CH42	Belt-Drive Roof Supply [Power Roof Ventilators]	Impeller Diameter: 30 in CFM: 6,901 to 8,628 ft3/min	<input checked="" type="checkbox"/>
7D503	Filtered Supply [Power Roof Ventilators]	Impeller Diameter: 13 1/4 in CFM: 2,363 to 3,801 ft3/min	<input type="checkbox"/>
7D507	Filtered Supply [Power Roof Ventilators]	Impeller Diameter: 15 1/2 in CFM: 1,591 to 4,317 ft3/min	<input checked="" type="checkbox"/>

NEWS...

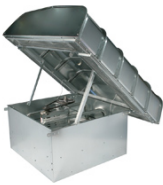
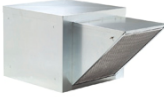
Solutions For Air

Your Ventilation Information Resource

for the FANS


November 2009 — www.solutionsforair.com

The products you select are displayed, allowing you to compare similarities and differences. Differences are highlighted in gray. At this point, you can remove and/or add an item. After comparing, select the product that will work best in your application. You can either click the red 'Purchase' button or click 'View Item Details' to learn more about this exact model and size.


	Item #7CH42	Item #7D507
Properties that differ between the items are highlighted		
	(View Item Details)	(View Item Details)
	Purchase	Purchase
	(Remove)	(Remove)
Agency Compliance [?]	—	AMCA Sound & Air UL/cUL 705
Assembled [?]	FALSE	FALSE
Base Height [?]	22 in	1 1/2 in
Bearing Type [?]	Sealed Pillow Block	Sealed Pillow Block
CFM (Min. - Max.) [?]	6,901 to 8,628 ft3/min	1,591 to 4,317 ft3/min
Curb Cap Size [?]	34 1/2 in	34 1/2 in
Damper Width x Damper Height [?]	30 x 30 in	—
Drive Package Description [?]	Drives Packaged Separately	Drives Packaged Separately
Drive Type [?]	Belt Drive	Belt Drive
Fan Description	Supply Fan	Supply Fan
Frame Material [?]	Galvanized Steel	—



Lots of information is available at the item details page including catalogs, a submittal, performance details, recommended accessories, an owners manual, repair parts, and tons more. Still not sure this is the right product for you? Let us help! Select 'Submit a Question About This Product' to contact us direct.



SolutionsForAir
Your Ventilation Information Resource



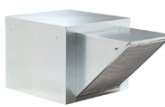
HOME
PRODUCTS
VENTILATION MATCH
VENTILATION SCHOOL
HELP & SUPPORT
CONTACT US

Item # Search
Home > Products > Item Details - #7D507
NEW Products

Item Details - #7D507

Centrifugal Belt-Drive Filtered Supply Ventilator

Designed to supply untempered filtered make-up air to commercial and institutional buildings or in commercial kitchen applications. Units are constructed of heavy gauge galvanized steel. Neoprene isolators minimize vibration and noise.



- Lifting lugs on drive frame
- Maximum inlet air temperature: 120° F
- NEMA 1 junction box located in motor enclosure
- Optional NEMA 1 and 4 disconnects available
- Sealed pillow block bearings
- UL/cUL 705 Listed for Power Ventilators
- Air handling quality bearings meet minimum of L10-10,000 hours

[\(Enlarge\)](#)
[View Product Drawing](#)
[Purchase](#)

Recommended Accessories

Fixed, Straight-Sid Roof Curb 2RB60

Adjustable, Straight-Sid Roof Curb 2ZV64

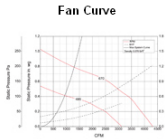
Fixed, Canted Roof Curb 4HVR2

Literature

- Submittal (PDF) | HTML Version
- Operating Instructions & Parts Manual (PDF)
- Repair Parts List (PDF)
- Catalog Page (PDF)
- Ventilation Fundamentals (PDF)
- Troubleshoot: Filtered Supply Ventilators
- Submit a Question About This Product

Performance

Fan Curve



Motor HP	Max BHP	Fan RPM	CFM @	0.689" SP	0.125" SP	0.250" SP	0.375" SP	0.500" SP
1	1.13	670	CFM	4317	4049	3760	3456	2905
			Sones	22.0	21.0	18.7	17.2	15.1

Item Details (Glossary)

Specifications

Agency Compliance [?]

- UL/cUL 705
- AMCA Sound & Air

Assembled [?]

FALSE

Base Height [?]

1 1/2 in

Bearing Type [?]

Sealed Pillow Block

CFM [?]

1,591 to 4,317 ft3/min

Curb Cap Size [?]

34 1/2 in

Drive Package