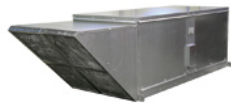


## Direct Fired Make-up Air Heater



Designed for commercial kitchen applications or industrial buildings with process exhaust. The direct gas burners are 92% efficient and operate on natural gas. Units constructed of 18 gauge galvanized steel with standard lifting lugs for easy installation. Cabinet is lined with 1-inch foil faced insulation, includes a motorized intake damper and weatherhood with washable aluminum air filters.

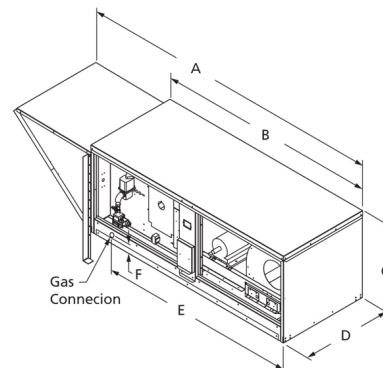
- Natural gas burners are 92% efficient
- Burners are capable of 25:1 turndown ratio
- Heating capacities of up to 200,000 Btu/H



### GREEN Product

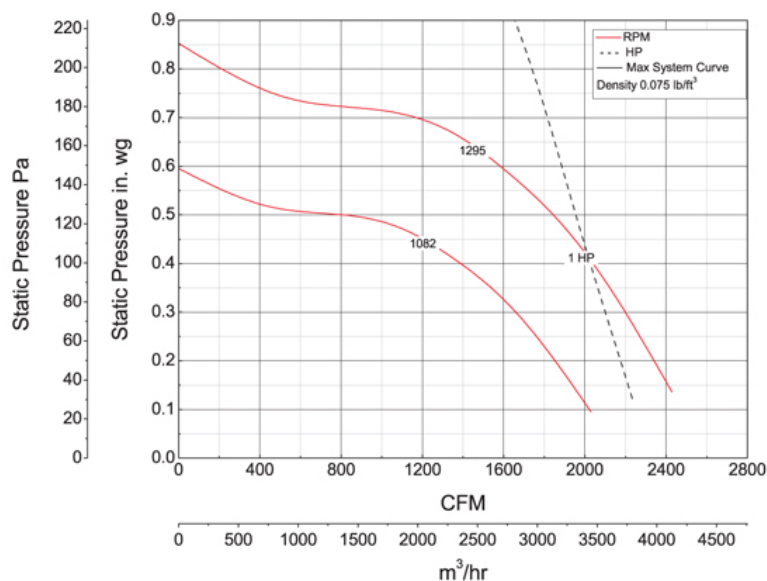
- 92% Efficient Gas Burner
- Increased Ventilation
- Meets Minimum & Optimize Energy Performance
- Meets Minimum IAQ Performance
- Outdoor Air Delivery Monitoring
- Thermal Comfort Design

ETL



A	B	C	D	E	F
106 1/8 in	76 1/2 in	29 3/4 in	31 1/2 in	67 1/2 in	2 1/2 in

## Performance Characteristics



## Construction Features

Impeller Type	Backward Inclined Centrifugal
Impeller Material	Steel
Drive Package Description	Drives Assembled
Warranty Length	1 Year

## Motor Information

Motor Item Number	4YU30
Voltage	115/208-230
Hertz (Cycle)	60 Hz
Motor Phase	1
Motor Enclosure	Open Drip Proof
RPM	1,725 rpm
Full Load Amps	12.8/6.4-6.4

## Other Components

Component	Description	Item #
Fan Description	Make-up Air	—
Belt	A44 (QTY: 1)	3X621
Driver Sheave	1VL40x7/8	3X500
Driven Sheave	AK46x3/4	3X783

## Air & Sound Performance

Motor HP	Max BHP	Fan RPM	CFM @	0.250" SP	0.375" SP	0.500" SP	0.625" SP
1	0.41	1082	CFM	1320	—	—	—
			Sones	10.7	—	—	—
1	0.60	1132	CFM	1630	1225	—	—
			Sones	12.1	—	—	—
1	0.73	1170	CFM	1805	1505	—	—
			Sones	13.2	—	—	—
1	0.76	1177	CFM	1840	1545	1000	—
			Sones	13.4	—	—	—
1	0.79	1186	CFM	1880	1600	1125	—
			Sones	13.6	—	—	—
1	0.89	1214	CFM	2000	1765	1400	—
			Sones	14.7	—	—	—
1	1.00	1243	CFM	2115	1895	1605	—
			Sones	15.7	—	—	—
1	1.08	1295	CFM	2198	1995	1740	1365
			Sones	16.5	—	—	—