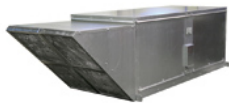


## Direct Fired Make-up Air Heater



Designed for commercial kitchen applications or industrial buildings with process exhaust. The direct gas burners are 92% efficient and operate on natural gas. Units constructed of 18 gauge galvanized steel with standard lifting lugs for easy installation. Cabinet is lined with 1-inch foil faced insulation, includes a motorized intake damper and weatherhood with washable aluminum air filters.

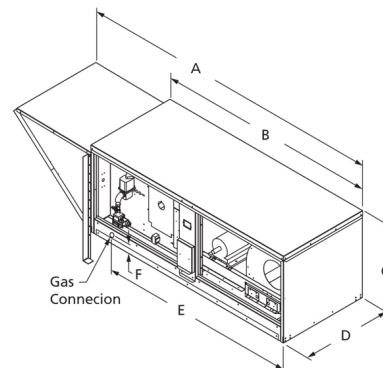
- Natural gas burners are 92% efficient
- Burners are capable of 25:1 turndown ratio
- Heating capacities of up to 400,000 Btu/H



## GREEN Product

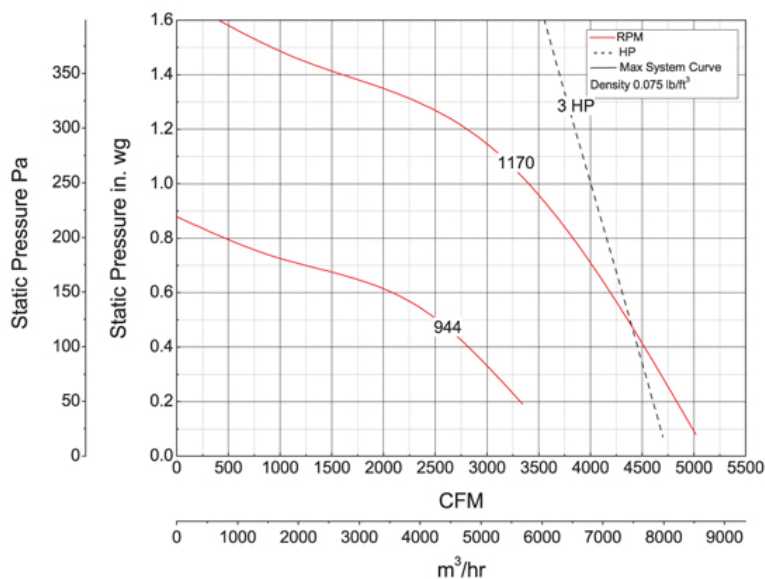
- 92% Efficient Gas Burner
- Increased Ventilation
- Meets Minimum & Optimize Energy Performance
- Meets Minimum IAQ Performance
- Outdoor Air Delivery Monitoring
- Thermal Comfort Design

ETL



A	B	C	D	E	F
106 1/8 in	76 1/2 in	29 3/4 in	31 1/2 in	67 1/2 in	2 1/2 in

## Performance Characteristics



## Construction Features

Impeller Type	Backward Inclined Centrifugal
Impeller Material	Steel
Drive Package Description	Drives Assembled
Warranty Length	1 Year

## Motor Information

Motor Item Number	6XWJ0
Voltage	208-230/460
Hertz (Cycle)	60 Hz
Motor Phase	3
Motor Enclosure	Open Drip Proof
RPM	rpm
Full Load Amps	

## Other Components

Component	Description	Item #
Fan Description	Make-up Air	—
Belt	A46 (QTY: 1)	6A147
Driver Sheave	1VP50x1-1/8	5UHT4
Driven Sheave	AK71x1	—

## Air &amp; Sound Performance

Motor HP	Max BHP	Fan RPM	CFM @	0.250" SP	0.375" SP	0.500" SP	0.625" SP	0.750" SP	0.875" SP	1.000" SP
3	1.37	944	CFM	3185	2845	2505	—	—	—	—
			Sones	15.7	—	—	—	—	—	—
3	1.52	965	CFM	3360	3030	2695	—	—	—	—
			Sones	16.2	—	—	—	—	—	—
3	1.77	999	CFM	3610	3315	3000	2680	—	—	—
			Sones	17.1	—	—	—	—	—	—
3	2.03	1030	CFM	3825	3580	3270	2960	2590	—	—
			Sones	17.7	—	—	—	—	—	—
3	2.36	1069	CFM	4085	3870	3600	3300	3000	—	—
			Sones	18.6	—	—	—	—	—	—
3	2.48	1082	CFM	4170	3960	3710	3415	3115	2820	—
			Sones	19.0	—	—	—	—	—	—
3	2.70	1105	CFM	4325	4115	3900	3605	3320	3030	—
			Sones	19.5	—	—	—	—	—	—
3	2.97	1132	CFM	4500	4295	4090	3840	3550	3275	2985
			Sones	20.0	—	—	—	—	—	—
3	3.18	1170	CFM	—	4548	4350	4150	3880	3605	3330
			Sones	—	—	—	—	—	—	—

Operating Range of Drive Package

Turns Open	FRPM @ 0 TO	FRPM @ 1/2 TO	FRPM @ 1 TO	FRPM @ 1 1/2 TO	FRPM @ 2 TO	FRPM @ 2 1/2 TO	FRPM @ 3 TO	FRPM @ 3 1/2 TO	FRPM @ 4 TO	FRPM @ 4 1/2 TO	FRPM @ 5 TO
Approx. FRPM	1171	1146	1121	1095	1070	1045	1020	995	969	944	—