



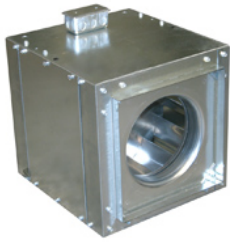
Stock No.  
**5TCK7**

Job Name:  
Mark:

Submitted By:  
Date:5/11/2024

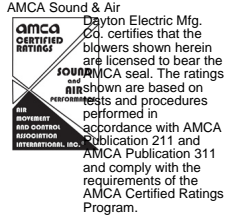
Blowers

## Centrifugal Direct-Drive In-Line Duct Blower

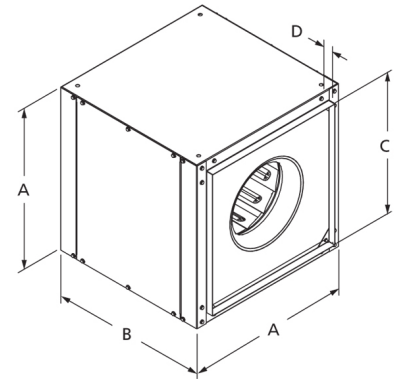


Designed for indoor clean air applications including intake, exhaust, return, or make-up air systems in industrial or commercial buildings. Rugged construction allows fan to be installed in ductwork either horizontally or vertically. Duct collars provide easy duct connections.

- Aluminum backward inclined, nonoverloading centrifugal wheel design
- NEMA 1 junction box included
- Units are speed controllable
- Maximum inlet air temperature: 104° F
- UL/cUL 705 Listed for Power Ventilators

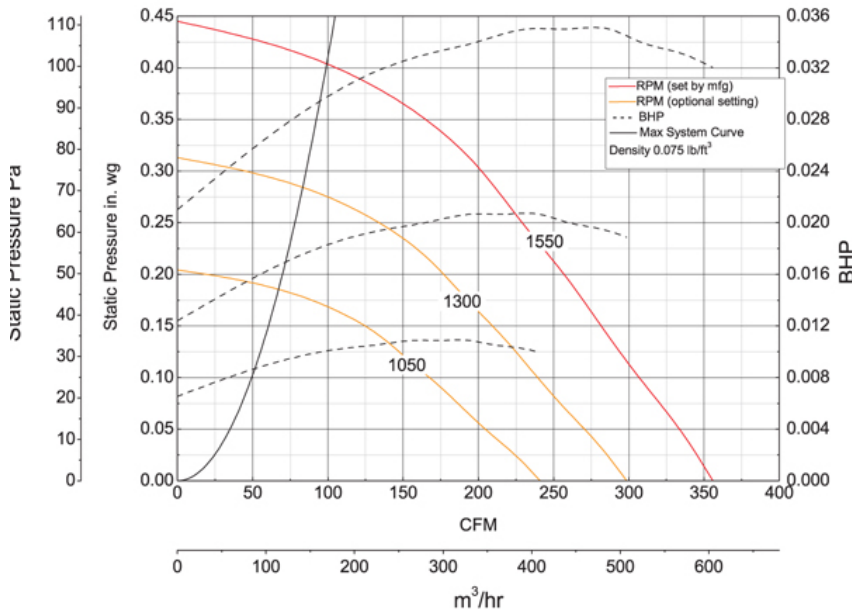


CSA Certified Motor



A	B	C	D
12 in	13 in	8 7/8 in	1 in

## Performance Characteristics



## Construction Features

Impeller Diameter (Typ.)	8 1/8 in
Impeller Type	Backward Inclined Centrifugal
Impeller Material	Aluminum
Max Inlet Temp	104 °F
Warranty Length	1 Year

## Motor Information

Motor Item Number	4YU32
Voltage	115
Hertz (Cycle)	60 Hz
Motor Phase	1
Motor Enclosure	Vented
RPM	1,550 rpm, 1,300 rpm, 1,050 rpm
Full Load Amps	1.3/0.92/0.68

## Air & Sound Performance

Motor HP	Max BHP	Fan RPM	CFM @	0.000" SP	0.125" SP	0.250" SP	0.375" SP
1/30	0.01	1050	CFM	241	146	—	—
			Sones	3.6	2.9	—	—
1/30	0.02	1300	CFM	299	224	133	—
			Sones	4.1	3.7	3.5	—
1/30	0.04	1550	CFM	356	294	229	137
			Sones	6.1	5.5	4.9	4.8

Performance certified is for installation type B: Free inlet, Ducted outlet. Performance ratings do not include the effects of appurtenances (accessories). The sound ratings shown are loudness values in fan sones at 5 ft. (1.5 m) in a hemispherical free field calculated per AMCA Standard 301. Values shown are for installation type B: Free inlet hemispherical fan sone levels.