



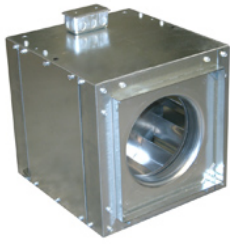
Stock No.
5TCK8

Job Name:
Mark:

Submitted By:
Date:5/19/2024

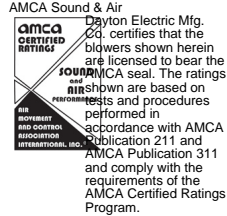
Blowers

Centrifugal Direct-Drive In-Line Duct Blower

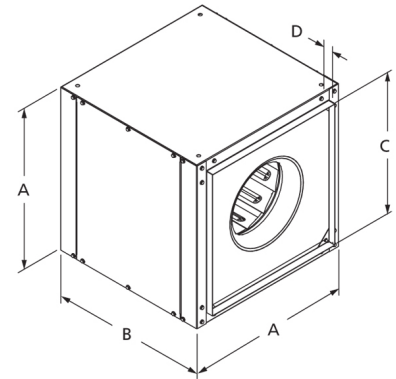


Designed for indoor clean air applications including intake, exhaust, return, or make-up air systems in industrial or commercial buildings. Rugged construction allows fan to be installed in ductwork either horizontally or vertically. Duct collars provide easy duct connections.

- Aluminum backward inclined, nonoverloading centrifugal wheel design
- NEMA 1 junction box included
- Units are speed controllable
- Maximum inlet air temperature: 104° F
- UL/cUL 705 Listed for Power Ventilators

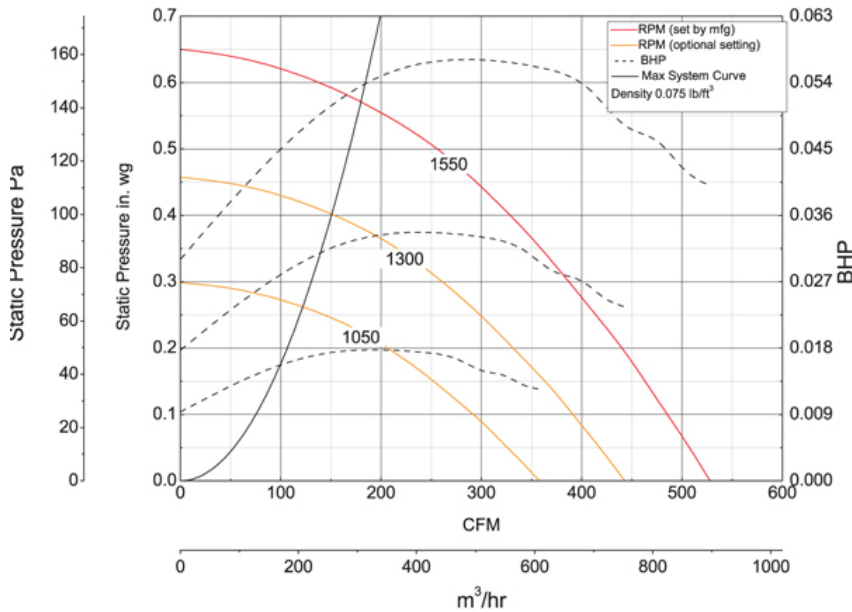


CSA Certified Motor



A	B	C	D
15 in	16 in	11 7/8 in	1 in

Performance Characteristics



Construction Features

Impeller Diameter (Typ.)	11 in
Impeller Type	Backward Inclined Centrifugal
Impeller Material	Aluminum
Max Inlet Temp	104 °F
Warranty Length	1 Year

Motor Information

Motor Item Number	1AGF9
Voltage	115
Hertz (Cycle)	60 Hz
Motor Phase	1
Motor Enclosure	Totally Enclosed
RPM	1,550 rpm, 1,300 rpm, 1,050 rpm
Full Load Amps	1.7/1.3/1.0

Air & Sound Performance

Motor HP	Max BHP	Fan RPM	CFM @	0.000" SP	0.125" SP	0.250" SP	0.375" SP	0.500" SP
1/12	0.02	1050	CFM	357	272	142	—	—
			Sones	4.0	3.9	4.0	—	—
1/12	0.03	1300	CFM	442	377	298	185	—
			Sones	5.5	5.3	5.3	5.4	—
1/12	0.06	1550	CFM	528	474	413	343	254
			Sones	7.6	7.4	7.4	7.4	7.6

Performance certified is for installation type B: Free inlet, Ducted outlet. Performance ratings do not include the effects of appurtenances (accessories). The sound ratings shown are loudness values in fan sones at 5 ft. (1.5 m) in a hemispherical free field calculated per AMCA Standard 301. Values shown are for installation type B: Free inlet hemispherical fan sone levels.