



Stock No.
7A872
(Fan Model 4YY24)

Job Name:
Mark:

Submitted By:
Date:5/19/2024

Power Roof Ventilators

Axial Belt-Drive Upblast Exhaust Ventilator



Designed for use in industrial and commercial buildings such as warehouses, manufacturing facilities, foundries, and laboratories. Housing is constructed of heavy gauge galvanized steel. The windband is removable for easy inspection. Lifting lugs are provided.

- Maximum inlet air temperature: 120° F
- UL/cUL 705 Listed for Power Ventilators
- Air handling quality bearings meet minimum of L10-100,000 hours
- Regreaseable pillow block bearings



GREEN Product

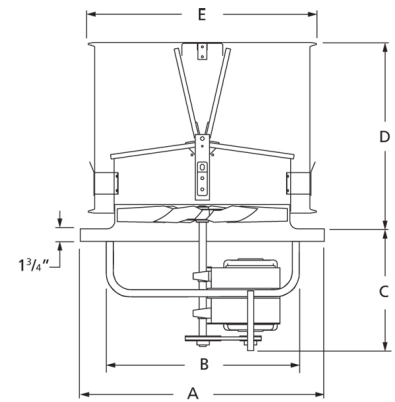
- Motor is VFD Compatible
- Meets Minimum & Optimize Energy Performance

AMCA Sound & Air



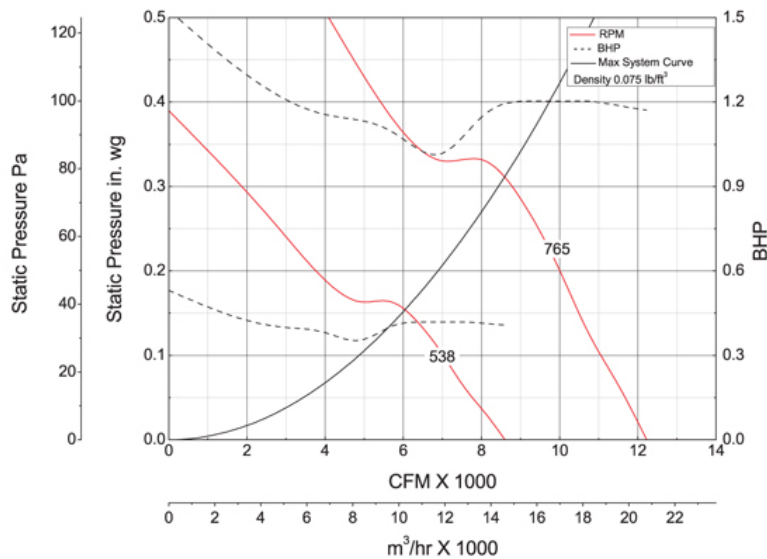
Dayton Electric Mfg. Co. certifies that the ventilators shown herein are licensed to bear the AMCA seal. The ratings shown are based on tests and procedures performed in accordance with AMCA Publication 211 and AMCA Publication 311 and comply with the requirements of the AMCA Certified Ratings Program.

UL/cUL 705



A	B	C	D	E
38 3/4 in	32 1/2 in	18 1/8 in	30 in	37 3/8 in

Performance Characteristics



Construction Features

Impeller Diameter (Typ.)	30 in
Impeller Type	Propeller
Impeller Material	Steel
Max Inlet Temp	120 °F
Bearing Type	Regreaseable Pillow Block
Drive Package Description	Drives Packaged Separately
Warranty Length	1 Year

Motor Information

Motor Item Number	2NKX4
Voltage	208-230/460
Hertz (Cycle)	60 Hz
Motor Phase	3
Motor Enclosure	Totally Enclosed Fan-Cooled
RPM	1,760 rpm
Full Load Amps	3.2-3.2/1.6

Other Components

Component	Description	Item #
Fan Description	Exhaust Fan	4YY24
Belt	A36 (QTY: 1)	6A144
Driver Sheave	1VP3478	5UHR2
Driven Sheave	AK74	6YRD1
Driven Bushing	QT1	5UHZ2

Air & Sound Performance

Motor HP	Max BHP	Fan RPM	CFM @	0.000" SP	0.125" SP	0.250" SP
1	1.20	765	CFM	12,227	10,765	9434
			Sones	21.0	20.0	19.8

Performance certified is for installation type A: Free inlet, Free outlet. Power rating (BHP) does not include transmission losses. Performance ratings do not include the effects of appurtenances (accessories). The sound ratings shown are loudness values in fan sones at 5 ft. (1.5 m) in a hemispherical free field calculated per AMCA Standard 301. Values shown are for installation type A: Free inlet hemispherical sone levels.

Catalog 405, January 2010

Operating Range of Drive Package

Turns Open	FRPM @ 0 TO	FRPM @ 1/2 TO	FRPM @ 1 TO	FRPM @ 1 1/2 TO	FRPM @ 2 TO	FRPM @ 2 1/2 TO	FRPM @ 3 TO	FRPM @ 3 1/2 TO	FRPM @ 4 TO	FRPM @ 4 1/2 TO	FRPM @ 5 TO
Approx. FRPM	765	736	711	687	662	637	612	587	563	538	—