



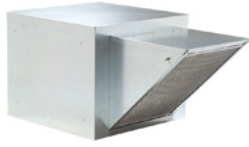
Stock No.  
**7D495**  
(Fan Model 4YC82)

Job Name:  
Mark:

Submitted By:  
Date:5/19/2024

Power Roof Ventilators

## Centrifugal Belt-Drive Filtered Supply Ventilator

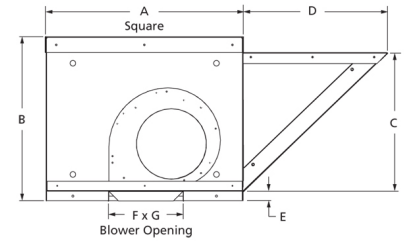


Designed to supply untempered filtered make-up air to commercial and institutional buildings or in commercial kitchen applications. Units are constructed of heavy gauge galvanized steel. Neoprene isolators minimize vibration and noise.

- Lifting lugs on drive frame
- Maximum inlet air temperature: 120° F
- NEMA 1 junction box located in motor enclosure
- Optional NEMA 1 and 4 disconnects available
- Sealed pillow block bearings
- UL/cUL 705 Listed for Power Ventilators
- Air handling quality bearings meet minimum of L10-100,000 hours

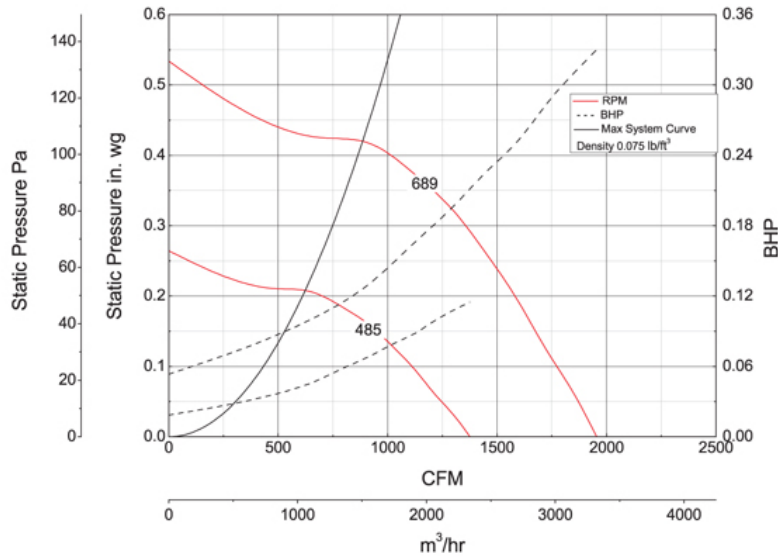


Dayton Electric Mfg. Co. certifies that the ventilators shown herein are licensed to bear the AMCA seal. The ratings shown are based on tests and procedures performed in accordance with AMCA Publication 211 and AMCA Publication 311 and comply with the requirements of the AMCA Certified Ratings Program.



A	B	C	D	E	F
30 in	25 in	21 1/4 in	22 in	1 1/2 in	11 3/8 in
G					
13 3/8 in					

## Performance Characteristics



## Construction Features

Impeller Diameter (Typ.)	11 1/8 in
Impeller Type	Forward Curved Centrifugal
Impeller Material	Steel
Max Inlet Temp	120 °F
Bearing Type	Sealed Pillow Block
Drive Package Description	Drives Packaged Separately
Warranty Length	1 Year

## Motor Information

Motor Item Number	3K091
Voltage	115/208-230
Hertz (Cycle)	60 Hz
Motor Phase	1
Motor Enclosure	Open Drip Proof
RPM	1,725 rpm
Full Load Amps	4.6/2.2-2.3

## Other Components

Component	Description	Item #
Fan Description	Supply Fan	4YC82
Belt	4L440 (QTY: 1)	4L440
Driver Sheave	1VP3412	5UHP9
Driven Sheave	AK8434	5RJF3

## Air & Sound Performance

Motor HP	Max BHP	Fan RPM	CFM @	0.000" SP	0.125" SP	0.250" SP	0.375" SP
1/4	0.28	689	CFM	1954	1722	1472	1115
			Sones	14.6	13.1	11.4	11.6

Performance certified is for installation type A: Free inlet, Free outlet. Power rating (BHP) does not include transmission losses. Performance ratings include the effects of a filter in the airstream. The sound ratings shown are loudness values in fan sones at 5 ft. (1.5 m) in a hemispherical free field calculated per AMCA Standard 301. Values shown are for installation type A: Free inlet fan sone levels.

Catalog 405, January 2010

## Operating Range of Drive Package

Turns Open	FRPM @ 0 TO	FRPM @ 1/2 TO	FRPM @ 1 TO	FRPM @ 1 1/2 TO	FRPM @ 2 TO	FRPM @ 2 1/2 TO	FRPM @ 3 TO	FRPM @ 3 1/2 TO	FRPM @ 4 TO	FRPM @ 4 1/2 TO	FRPM @ 5 TO
Approx. FRPM	689	663	641	619	596	574	552	529	507	485	—