

Occupational Health & Safety

Improve indoor air quality with Dayton In-Line Duct Blowers

Issue: Poor indoor air quality impacts worker performance.

Application: In-Line Duct Blowers are designed to provide conditioned air into work spaces to increase worker comfort and productivity.

Recommendation: Grainger offers a wide variety of sizes and styles to meet most ventilation requirements. Air moving capabilities range from 475 CFM – 1,403 CFM in direct drive units and 720 CFM – 22,967 CFM in belt drive units. Wheel sizes range from 11 inches up to 36 inches in diameter to adapt to the most common duct sizes.

Dayton[®]

*For more information contact
you Grainger representative,
local branch, or go online to
grainger.com*

Direct-Drive

- Units are speed controllable
- No. 2RB86 features a 3-speed motor
- Maximum inlet air temperature is 104°F

Belt-Drive

- Bearing cover and motor cover provide longer service life
- Air handling quality bearings meet a minimum of L10 life in excess of 100,000 hours of operation
- Units with 11" and 11-1/2" wheel diameters feature sealed pillow block bearings
- Units with 14" or larger wheel diameters feature regreasable pillow block bearings
- Maximum inlet air temperature is 160°F

Installation Flexibility

- Easy to install in ductwork either horizontally or vertically
- Square design eliminates square to round transition pieces
- Duct collars provide easy duct connections

Rugged Construction

- Fan housing is constructed of durable heavy gauged galvanized steel

Ease of Service

- Features an access panel on each side to permit quick access to internal fan components
- Name plate includes item number and unique serial number for future identification

High Efficiency

- Aluminum backward inclined, non-overloading, centrifugal wheel

Broad Performance Options

- Dayton In-Line Duct Blowers include a wide range of air delivery from 275 cfm to over 22,000 cfm

Compact Size

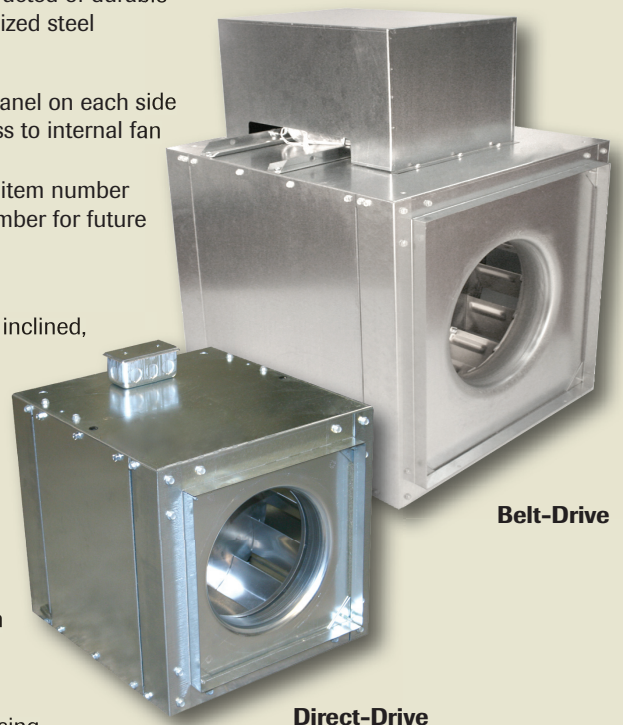
- Compact square housing design for limited space needs

Low Maintenance

- Each fan is factory tested for proper rpm, amp draw and wheel rotation

Third Party Certification

- AMCA Certified Rating for Sound and Air
- UL and C-UL 705 Listed for Power Ventilators

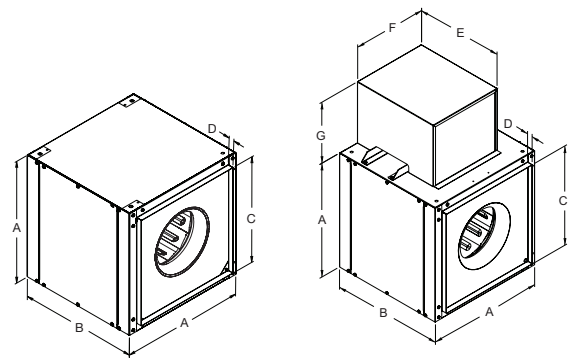


Occupational Health & Safety

Improve indoor air quality with Dayton In-Line Duct Blowers

Centrifugal In-Line Duct Blowers – Dimensions & Performance

Wheel Dia. (In.)	Dimensions (In.)							Inlet Dia. (In.)	Item No.
	A	B	C	D	E	F	G		
Direct-Drive									
11	15	16	11 7/8	1	—	—	—	7 3/4	2RB86
11	17	21	13 7/8	1	—	—	—	8 1/4	2RB87
Belt-Drive									
11	15	21	11 7/8	1	17 3/8	16	12 1/2	7 3/4	2RB88
11 1/2	17	21	13 7/8	1	17 3/8	16	12 1/2	7 3/4	2RB89
14	23	22	19 7/8	1	18 3/5	16	12 3/8	10	5AV78
16	26	26	22 7/8	1	21	17	13 3/8	11	5AV79
18	28	28	23 7/8	1 1/2	21	17	13 3/8	12 1/2	5AV80
20	32	32	27 7/8	1 1/2	25 3/5	18	13 3/4	14 1/2	5AV81
24	39	34	34 7/8	1 1/2	25 3/5	18	13 3/4	16 1/2	5AV82
30	46	38	41 7/8	1 1/2	35 1/4	22	18	20 1/2	5AV84
36	52	42	47 7/8	1 1/2	35 1/4	22	18	24 1/2	5AV85



Direct-Drive

Belt-Drive

Wheel Dia. (In.)	HP	Fan RPM	Max BHP	Sones @ 0.125 SP @ 5 Ft.	CFM Air Delivery @ Static Pressure Shown						Item No.	1-Phase Motors 115/230 Item No.	3-Phase Motors 230/460 Item No.
					0.125"	0.250"	0.500"	0.750"	1.000"	1.500"			
Direct-Drive													
11	1/8	1050	0.10	4.5	475	275	—	—	—	—	2RB86	—	—
11	1/8	1300	0.10	6.7	660	523	—	—	—	—	2RB86	—	—
11	1/8	1550	0.10	9.3	830	720	462	—	—	—	2RB86	—	—
11	1/4	1725	0.25	12.4	1403	1350	1227	1078	831	—	2RB87	—	—
Belt-Drive													
11	1/4	1833	0.26	17.2	720	687	613	524	424	—	2RB88	7M7R3	—
11	3/4	2645	0.79	28	1065	1041	995	945	894	773	2RB88	7M7R6	7M7R8
11 1/2	1/4	1609	0.26	15.4	1265	1207	1088	917	—	—	2RB89	7M7R9	—
11 1/2	1	2556	1.05	26	2066	2029	1956	1882	1810	1626	2RB89	7M7T3	7M7T6
14	1/4	800	0.11	6.3	1362	1185	—	—	—	—	5AV78	7H454	7H468
14	2	2153	2.10	30	4009	3958	3856	3741	3622	3365	5AV78	7A0J3	7A0J4
16	1/3	962	0.35	9.9	2643	2504	2150	—	—	—	5AV79	7A0J6	—
16	3	2001	3.14	40	5713	5648	5519	5390	5260	4946	5AV79	7A0K1	—
18	1/2	905	0.52	12.2	3564	3366	2928	2175	—	—	5AV80	7A0K3	7A0K4
18	3	1645	3.14	29	6656	6566	6377	6179	5981	5485	5AV80	7A0K7	—
20	1/2	756	0.52	12.7	3867	3624	3036	—	—	—	5AV81	7A0K9	7A0L0
20	3	1375	3.15	27	7314	7192	6948	6677	6396	5753	5AV81	7A0L1	—
24	1/2	569	0.51	12.3	5269	4833	3685	—	—	—	5AV82	7A0L2	7A0L3
24	5	1225	5.20	41	11,973	11,802	11,460	11,070	10,671	9804	5AV82	—	7H484
30	3/4	449	0.78	12.2	7693	7033	4827	—	—	—	5AV84	7A0M0	7A0M1
30	7 1/2	967	7.85	33	17,693	17,396	16,776	16,124	15,526	14,171	5AV84	—	7H487
36	1	376	1.04	12.6	10,039	9008	—	—	—	—	5AV85	7A0M8	7A0M9
36	10	811	10.45	33	22,967	22,607	21,888	21,011	19,986	18,195	5AV85	—	7H490

The products listed above are only a small representation of our full product line.
For a complete selection of Dayton HVAC products, see the Grainger catalog or visit grainger.com/dayton