

**Utility Exhaust Belt-Drive Blower**

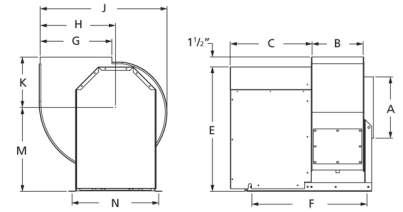


Designed for commercial kitchen exhaust or industrial spark resistant applications requiring high volumes of air at high static pressures. Suitable for ducted exhaust, supply or return-air applications. Constructed out of heavy gauge steel with polyester gray coating. The scroll is welded, has a bolted access door and 1 inch threaded drain connection for easy cleaning.

- Maximum inlet air temperature: 300° F
- UL/cUL 762 Listed for Restaurant Exhaust Appliances
- Polyester gray coating
- Backward incline nonoverloading aluminum wheel
- Aluminum rub ring
- Bolted access door

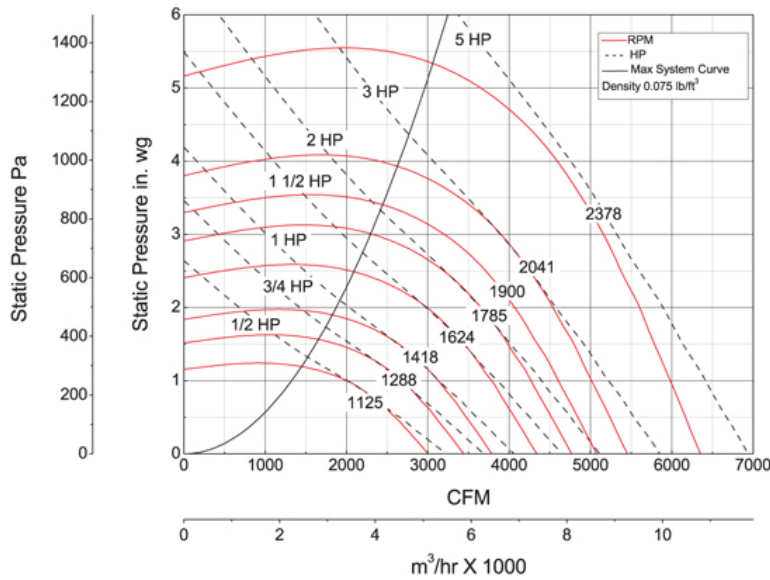


Dayton Electric Mfg. Co. certifies that the blowers shown herein are licensed to bear the AMCA seal. The ratings shown are based on tests and procedures performed in accordance with AMCA Publication 211 and comply with the requirements of the AMCA Certified Ratings Program.



<b>A</b>	<b>B</b>	<b>C</b>	<b>E</b>	<b>F</b>	<b>G</b>
17 1/2 in	12 3/4 in	19 1/2 in	30 in	28 1/4 in	17 1/2 in
<b>H</b>	<b>J</b>	<b>K</b>	<b>M</b>	<b>N</b>	
17 3/4 in	31 in	12 1/2 in	20 3/8 in	21 3/8 in	

**Performance Characteristics**



**Construction Features**

<b>Impeller Diameter (Typ.)</b>	16 1/2 in
<b>Impeller Type</b>	Backward Inclined Centrifugal
<b>Impeller Material</b>	Aluminum
<b>Max Inlet Temp</b>	300 °F
<b>Bearing Type</b>	Ball
<b>Drive Package Description</b>	Drives By Others
<b>Warranty Length</b>	1 Year

**Air & Sound Performance**

Motor HP	Max BHP	Fan RPM	CFM @	0.000" SP	0.125" SP	0.250" SP	0.375" SP	0.500" SP	0.625" SP	0.750" SP	0.875" SP	1.000" SP	1.250" SP	1.500" SP	1.750" SP	2.000" SP	2.250" SP	2.500" SP	2.750" SP	3.000" SP
1/2	0.50	1125	CFM	3006	2908	2808	2707	2600	2484	2354	2196	1988	—	—	—	—	—	—	—	—
			Sones	11.6	11.3	11.0	10.7	10.3	10.1	9.8	9.6	9.2	—	—	—	—	—	—	—	—
3/4	0.75	1288	CFM	3441	3355	3270	3181	3093	3003	2899	2793	2677	2370	1824	—	—	—	—	—	—
			Sones	13.9	13.6	13.3	12.9	12.7	12.4	12.2	12.0	11.7	11.2	10.7	—	—	—	—	—	—
1	1.00	1418	CFM	3789	3710	3633	3554	3473	3394	3312	3216	3125	2909	2631	2186	—	—	—	—	—
			Sones	16.0	15.7	15.4	15.1	14.8	14.5	14.3	14.1	13.9	13.5	13.0	12.4	—	—	—	—	—
1 1/2	1.50	1624	CFM	4339	4270	4203	4135	4066	3994	3925	3858	3782	3621	3443	3235	2973	2607	—	—	—
			Sones	19.3	19.0	18.8	18.5	18.3	18.0	17.8	17.5	17.3	16.9	16.5	16.1	15.7	15.0	—	—	—
2	2.00	1785	CFM	4769	4706	4645	4584	4521	4458	4393	4330	4268	4131	3985	3825	3647	3447	3173	2799	—
			Sones	22.0	21.0	21.0	21.0	21.0	20.0	20.0	19.9	19.7	19.3	18.9	18.6	18.2	17.8	17.2	16.6	—
3	2.42	1900	CFM	5076	5017	4959	4902	4844	4785	4724	4664	4604	4489	4349	4215	4061	3894	3706	3465	3201
			Sones	23.0	23.0	23.0	23.0	22.0	22.0	22.0	22.0	22.0	21.0	21.0	21.0	20.0	19.7	19.3	18.8	18.2
3	3.00	2041	CFM	5453	5398	5344	5291	5237	5182	5127	5071	5014	4904	4797	4661	4538	4396	4250	4075	3893
			Sones	26.0	26.0	25.0	25.0	25.0	25.0	24.0	24.0	24.0	24.0	24.0	23.0	23.0	23.0	22.0	22.0	21.0
5	4.70	2378	CFM	6353	6306	6259	6213	6168	6122	6075	6028	5981	5884	5788	5694	5604	5489	5377	5271	5148
			Sones	34.0	33.0	33.0	33.0	32.0	32.0	32.0	32.0	32.0	31.0	31.0	30.0	30.0	29.0	29.0	28.0	28.0

Performance certified is for installation type B: Free inlet, Ducted outlet. Power rating (BHP) does not include transmission losses. Performance ratings do not include the effects of appurtenances (accessories). The AMCA Certified ratings Seal applies to air performance ratings only.