



Stock No.
1WBX2

Job Name:
Mark:

Submitted By:
Date:5/2/2025

Blowers

Utility Exhaust Belt-Drive Blower



Designed for commercial kitchen exhaust or industrial spark resistant applications requiring high volumes of air at high static pressures. Suitable for ducted exhaust, supply or return-air applications. Constructed out of heavy gauge steel with polyester gray coating. The scroll is welded, has a bolted access door and 1 inch threaded drain connection for easy cleaning.

- Maximum inlet air temperature: 300° F
- UL/cUL 762 Listed for Restaurant Exhaust Appliances
- Polyester gray coating
- Backward incline nonoverloading aluminum wheel
- Aluminum rub ring
- Bolted access door

AMCA Air

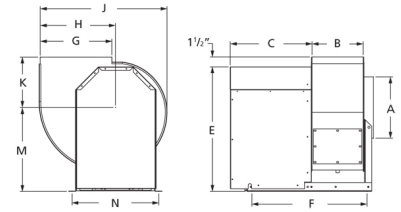


Dayton Electric Mfg. Co. certifies that the blowers shown herein are licensed to bear the AMCA seal. The ratings shown are based on tests and procedures performed in accordance with AMCA Publication 211 and comply with the requirements of the AMCA Certified Ratings Program.

UL/cUL 762

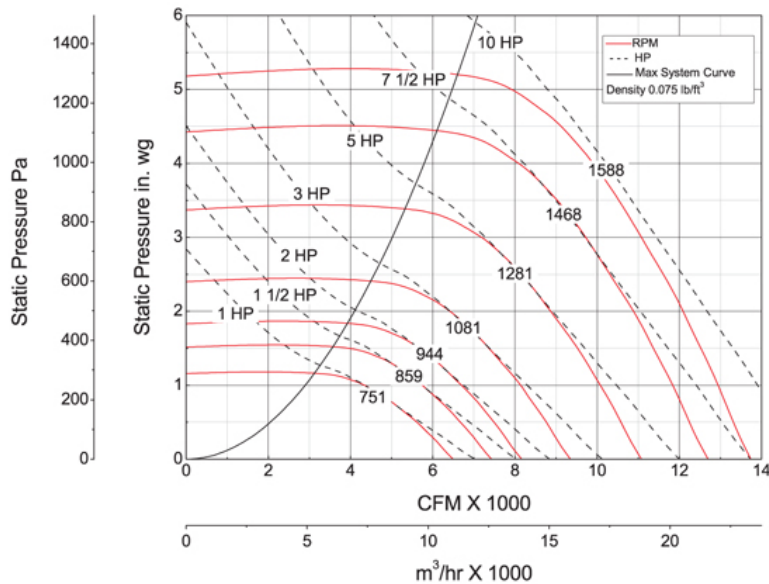


E53236
MH12596



A	B	C	E	F	G
25 7/8 in	19 in	25 in	45 3/4 in	36 in	26 in
H	J	K	M	N	
26 1/4 in	45 7/8 in	17 3/4 in	31 1/2 in	31 1/8 in	

Performance Characteristics



Air & Sound Performance

Performance certified is for installation type B: Free inlet, Ducted outlet. Power rating (BHP) does not include transmission losses. Performance ratings do not include the effects of appurtenances (accessories). The AMCA Certified ratings Seal applies to air performance ratings only.