

**Utility Exhaust Belt-Drive Blower**

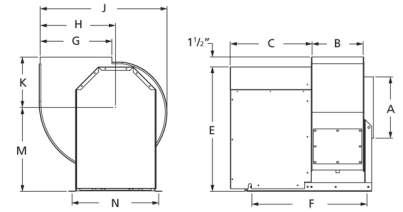


Designed for commercial kitchen exhaust or industrial spark resistant applications requiring high volumes of air at high static pressures. Suitable for ducted exhaust, supply or return-air applications. Constructed out of heavy gauge steel with polyester gray coating. The scroll is welded, has a bolted access door and 1 inch threaded drain connection for easy cleaning.

- Maximum inlet air temperature: 300° F
- UL/cUL 762 Listed for Restaurant Exhaust Appliances
- Polyester gray coating
- Backward incline nonoverloading aluminum wheel
- Aluminum rub ring
- Bolted access door

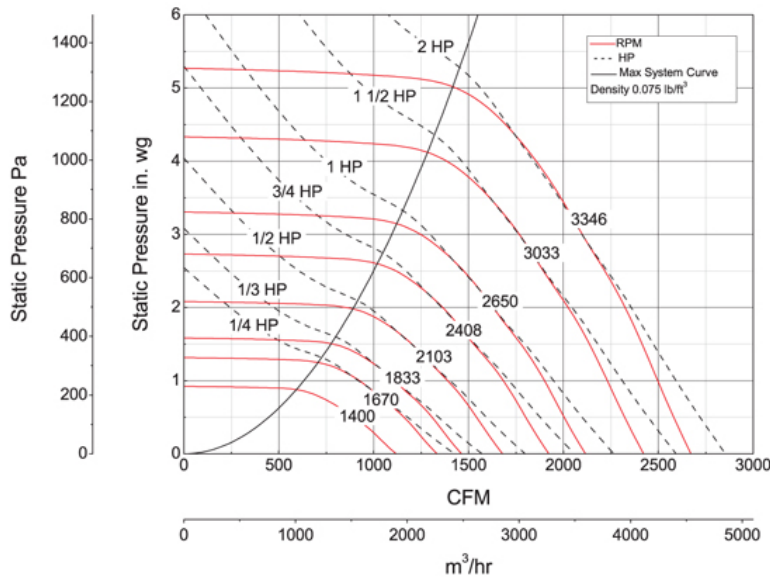


Dayton Electric Mfg. Co. certifies that the blowers shown herein are licensed to bear the AMCA seal. The ratings shown are based on tests and procedures performed in accordance with AMCA Publication 211 and comply with the requirements of the AMCA Certified Ratings Program.



<b>A</b>	<b>B</b>	<b>C</b>	<b>E</b>	<b>F</b>	<b>G</b>
11 in	9 3/4 in	15 1/2 in	22 1/4 in	21 7/8 in	11 1/4 in
<b>H</b>	<b>J</b>	<b>K</b>	<b>M</b>	<b>N</b>	
11 1/2 in	20 1/8 in	8 5/8 in	15 1/8 in	16 in	

**Performance Characteristics**



**Construction Features**

<b>Impeller Diameter (Typ.)</b>	11 1/8 in
<b>Impeller Type</b>	Backward Inclined Centrifugal
<b>Impeller Material</b>	Aluminum
<b>Max Inlet Temp</b>	300 °F
<b>Bearing Type</b>	Ball
<b>Drive Package Description</b>	Drives By Others
<b>Warranty Length</b>	1 Year

**Air & Sound Performance**

Motor HP	Max BHP	Fan RPM	CFM @	0.000" SP	0.125" SP	0.250" SP	0.375" SP	0.500" SP	0.625" SP	0.750" SP	0.875" SP	1.000" SP	1.250" SP	1.500" SP	1.750" SP	2.000" SP	2.250" SP	2.500" SP	2.750" SP	3.000" SP
1/4	0.15	1400	CFM	1118	1065	1015	960	893	824	737	564	—	—	—	—	—	—	—	—	—
			Sones	9.3	9.0	8.7	8.4	8.0	7.7	7.4	7.1	—	—	—	—	—	—	—	—	—
1/4	0.25	1670	CFM	1334	1289	1246	1205	1158	1105	1047	990	922	658	—	—	—	—	—	—	—
			Sones	11.5	11.1	10.8	10.5	10.1	9.8	9.5	9.3	9.1	8.5	—	—	—	—	—	—	—
1/3	0.33	1833	CFM	1464	1423	1383	1346	1307	1264	1215	1161	1109	990	738	—	—	—	—	—	—
			Sones	12.9	12.6	12.3	12.0	11.7	11.3	11.1	10.9	10.6	10.1	9.6	—	—	—	—	—	—
1/2	0.50	2103	CFM	1680	1644	1608	1575	1542	1509	1472	1434	1389	1296	1198	1071	788	—	—	—	—
			Sones	15.6	15.3	15.0	14.8	14.6	14.4	14.1	13.9	13.7	13.2	12.8	12.3	11.9	—	—	—	—
3/4	0.75	2408	CFM	1924	1892	1861	1830	1802	1773	1744	1714	1681	1610	1528	1449	1359	1251	1112	—	—
			Sones	18.6	18.4	18.2	18.0	17.8	17.6	17.4	17.2	17.0	16.6	16.2	15.8	15.5	15.0	14.6	—	—
1	1.00	2650	CFM	2117	2088	2060	2031	2005	1979	1953	1926	1900	1840	1776	1702	1629	1555	1469	1364	1237
			Sones	21.0	21.0	20.0	20.0	20.0	19.8	19.6	19.4	19.3	18.9	18.6	18.2	17.8	17.5	17.0	16.6	16.1
1 1/2	1.50	3033	CFM	2423	2398	2373	2348	2323	2300	2277	2254	2232	2186	2135	2083	2024	1959	1895	1832	1764
			Sones	25.0	25.0	24.0	24.0	24.0	24.0	24.0	24.0	24.0	23.0	23.0	23.0	22.0	22.0	22.0	21.0	21.0
2	2.00	3346	CFM	2673	2650	2628	2605	2582	2560	2539	2518	2498	2456	2415	2370	2322	2274	2217	2158	2100
			Sones	29.0	29.0	28.0	28.0	28.0	28.0	28.0	28.0	28.0	27.0	27.0	27.0	26.0	26.0	26.0	25.0	25.0

Performance certified is for installation type B: Free inlet, Ducted outlet. Power rating (BHP) does not include transmission losses. Performance ratings do not include the effects of appurtenances (accessories). The AMCA Certified ratings Seal applies to air performance ratings only.