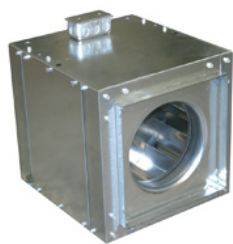


## Variable Speed Electronically Commutated (EC) Blower



Designed for indoor clean air applications including intake, exhaust, return, or make-up air systems in industrial or commercial buildings. Rugged construction allows fan to be installed in ductwork either horizontally or vertically. Duct collars provide easy duct connections. Energy Saving units feature EC motors which allow up to 80% usable turndown. Motor features potentiometer dial for speed adjustment. Optional Variable-Speed Control Kit (43Y140) can be used to remotely control speed.

- Aluminum backward inclined, nonoverloading centrifugal wheel design
- NEMA 1 junction box included
- Units are speed controllable
- Maximum inlet air temperature: 104° F
- UL/cUL 705 Listed for Power Ventilators
- Reduces overall energy usage and cost

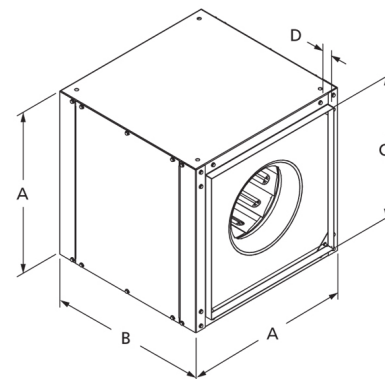


GREEN Product



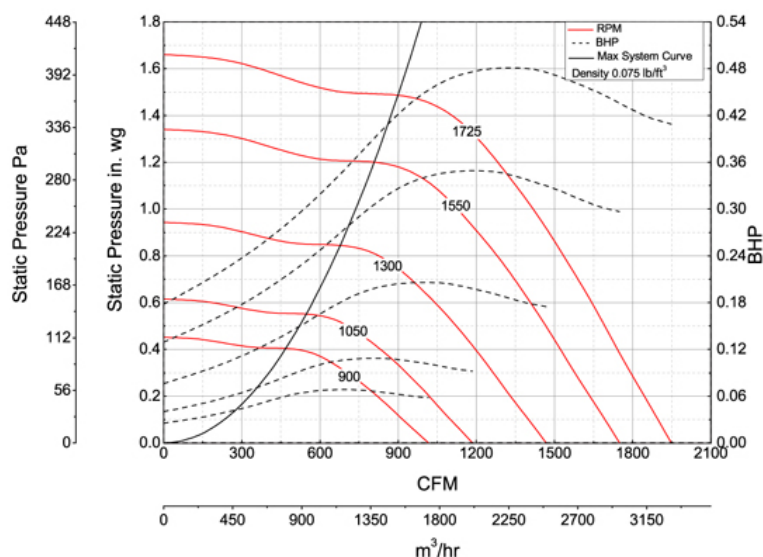
Dayton Electric Mfg. Co. certifies that the blowers shown herein are licensed to bear the AMCA seal. The ratings shown are based on tests and procedures performed in accordance with AMCA Publication 211 and AMCA Publication 311 and comply with the requirements of the AMCA Certified Ratings Program.

UL/cUL 705



A	B	C	D
15 in	16 in	11 7/8 in	1 in

## Performance Characteristics



## Construction Features

Impeller Diameter (Typ.)	11 in
Impeller Type	Backward Inclined Centrifugal
Impeller Material	Aluminum
Max Inlet Temp	104 °F
Warranty Length	1 Year

## Motor Information

Motor Item Number	43Y135
Voltage	115
Hertz (Cycle)	60 Hz
Motor Phase	1
Motor Enclosure	Totally Enclosed
RPM	rpm
Full Load Amps	3.1

## Air & Sound Performance

Motor HP	Max BHP	Fan RPM	CFM @	0.000" SP	0.125" SP	0.250" SP	0.375" SP	0.500" SP	0.625" SP	0.750" SP
1/6	0.02	900	CFM	534	353	—	—	—	—	—
			Sones	3.0	2.8	—	—	—	—	—
1/6	0.10	1050	CFM	623	475	275	—	—	—	—
			Sones	4.9	4.5	4.5	—	—	—	—
1/6	0.10	1300	CFM	771	660	523	352	—	—	—
			Sones	7.6	6.7	6.4	6.4	—	—	—
1/6	0.10	1550	CFM	920	830	720	604	462	276	—
			Sones	9.6	9.3	8.7	8.1	7.6	7.1	—
1/6	0.14	1725	CFM	1024	948	850	751	641	507	352
			Sones	11.4	11.4	11.2	10.4	10.1	9.2	8.4

Performance certified for installation type B: Free inlet, Ducted outlet. Performance ratings do not include the effects of appurtenances (accessories). The sound ratings shown are loudness values in fan sones at 5 ft. (1.5 m) in a hemispherical free field calculated per AMCA Standard 301. Values shown are for installation type B: Free inlet hemispherical fan sone levels.