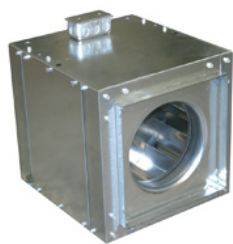


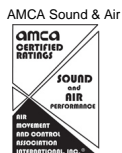
Variable Speed Electronically Commutated (EC) Blower

Designed for indoor clean air applications including intake, exhaust, return, or make-up air systems in industrial or commercial buildings. Rugged construction allows fan to be installed in ductwork either horizontally or vertically. Duct collars provide easy duct connections. Energy Saving units feature EC motors which allow up to 80% usable turndown. Motor features potentiometer dial for speed adjustment. Optional Variable-Speed Control Kit (43Y140) can be used to remotely control speed.

- Aluminum backward inclined, nonoverloading centrifugal wheel design
- NEMA 1 junction box included
- Units are speed controllable
- Maximum inlet air temperature: 104° F
- UL/cUL 705 Listed for Power Ventilators
- Reduces overall energy usage and cost

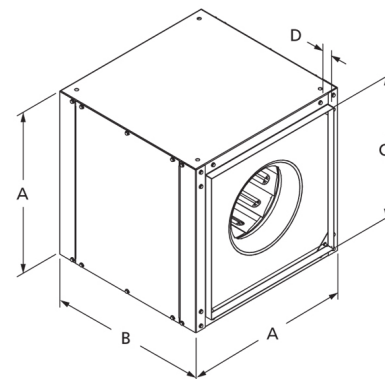


GREEN Product

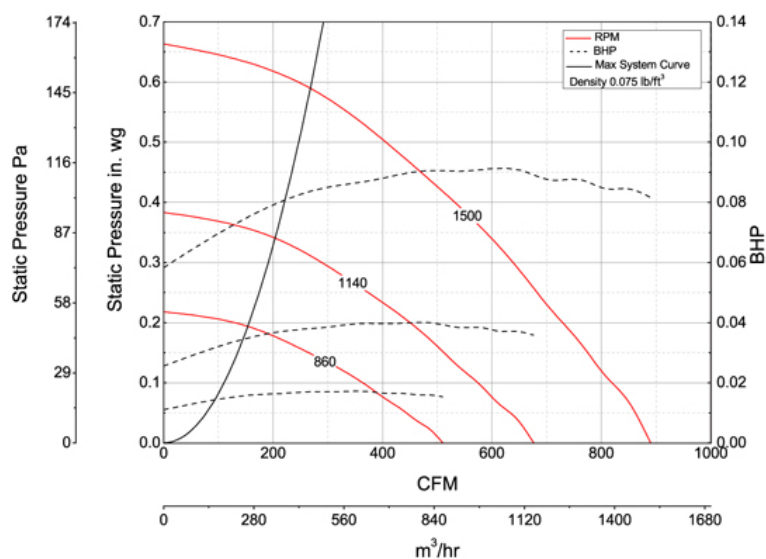


Dayton Electric Mfg. Co. certifies that the blowers shown herein are licensed to bear the AMCA seal. The ratings shown are based on tests and procedures performed in accordance with AMCA Publication 211 and AMCA Publication 311 and comply with the requirements of the AMCA Certified Ratings Program.

UL/cUL 705



A	B	C	D
23 in	22 in	19 7/8 in	1 in

Performance Characteristics**Construction Features**

Impeller Diameter (Typ.)	14 1/2 in
Impeller Type	Backward Inclined Centrifugal
Impeller Material	Aluminum
Max Inlet Temp	104 °F
Warranty Length	1 Year

Motor Information

Motor Item Number	43Y138
Voltage	115
Hertz (Cycle)	60 Hz
Motor Phase	1
Motor Enclosure	Open
RPM	rpm
Full Load Amps	10.6

Air & Sound Performance

Motor HP	Max BHP	Fan RPM	CFM @	0.000" SP	0.125" SP	0.250" SP	0.375" SP	0.500" SP	0.625" SP	0.750" SP	0.875" SP	1.000" SP	1.250" SP
3/4	0.13	860	CFM	1637	1487	1317	1033	—	—	—	—	—	—
			Sones	7.0	6.2	6.2	5.9	—	—	—	—	—	—
3/4	0.30	1140	CFM	2170	2061	1942	1818	1666	1446	1121	—	—	—
			Sones	10.8	10.5	10.1	10.0	9.8	9.6	9.4	—	—	—
3/4	0.75	1550	CFM	2950	2870	2790	2703	2614	2524	2429	2316	2188	1809
			Sones	16.7	16.5	16.2	15.8	15.6	15.5	15.3	15.1	14.8	14.0

Performance certified is for installation type B: Free inlet, Ducted outlet. Performance ratings do not include the effects of appurtenances (accessories). The sound ratings shown are loudness values in fan sones at 5 ft. (1.5 m) in a hemispherical free field calculated per AMCA Standard 301. Values shown are for installation type B: Free inlet hemispherical fan sone levels.