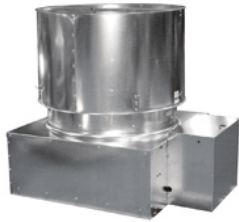


Emergency Smoke Exhaust Ventilator

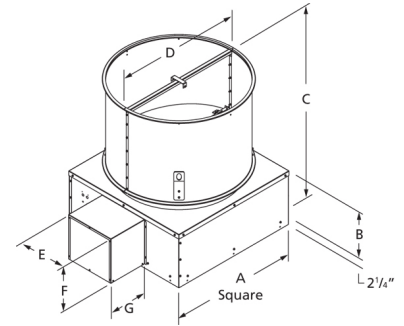


Designed for industrial and commercial buildings such as warehouses, manufacturing facilities, foundries, and laboratories. Constructed of heavy gauge steel and is UL listed for "Emergency Smoke Control". A removable motor cover enables quick and easy access to the motor, belt and drives from the roof deck.

- Maximum inlet air temperature: 120° F
- 500° F Operation for 4 hours
- 100° F Operation for 15 mins.
- High temperature regreasable pillow block bearings
- UL/cUL Listed for Emergency Smoke Control
- Spring loaded damper lifters meet UL-793 Snow Load Rating

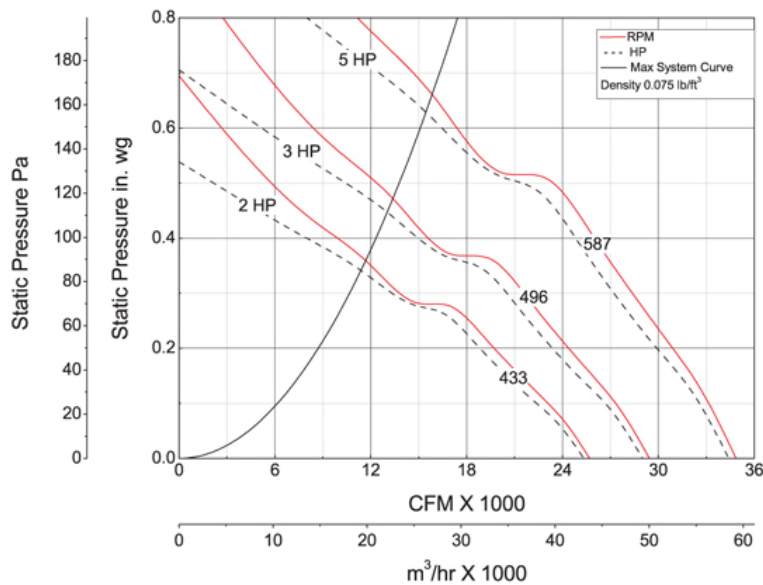


Dayton Electric Mfg. Co. certifies that the ventilators shown herein are licensed to bear the AMCA seal. The ratings shown are based on tests and procedures performed in accordance with AMCA Publication 211 and AMCA Publication 311 and comply with the requirements of the AMCA Certified Ratings Program.



A	B	C	D	E	F
57 1/2 in	21 3/4 in	71 833/1000 in	56 in	29 5/8 in	24 3/8 in
G					
16 1/2 in					

Performance Characteristics



Construction Features

Impeller Diameter (Typ.)	48 in
Impeller Type	Propeller
Impeller Material	Galvanized Steel
Number of Blades	6
Max Inlet Temp	120 °F
Bearing Type	High Temp. Regreaseable Pillow Block
Drive Package Description	Drives By Others
Warranty Length	1 Year

Air & Sound Performance

Motor HP	Max BHP	Fan RPM	CFM @	0.000" SP	0.125" SP	0.250" SP	0.375" SP	0.500" SP
2	2.20	433	CFM	25,642	22,583	18,650	—	—
			Sones	18.8	18.4	18.2	—	—
3	3.31	496	CFM	29,373	26,836	23,563	19,730	—
			Sones	23.0	23.0	22.0	23.0	—
5	5.49	587	CFM	34,761	32,809	30,166	27,319	24,091
			Sones	29.0	29.0	29.0	28.0	29.0

Performance certified is for installation type A: Free inlet, Free outlet. Power rating (BHP) does not include transmission losses. Performance ratings do not include the effects of appurtenances (accessories). The sound ratings shown are loudness values in fan sones at 5 ft. (1.5 m) in a hemispherical free field calculated per AMCA Standard 301. Values shown are for installation type A: Free inlet hemispherical fan sone levels. The AMCA Certified Ratings Seal applies to sone ratings only.