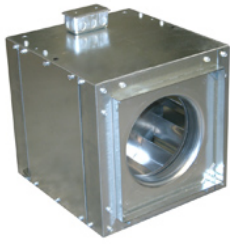


Centrifugal Direct-Drive In-Line Duct Blower

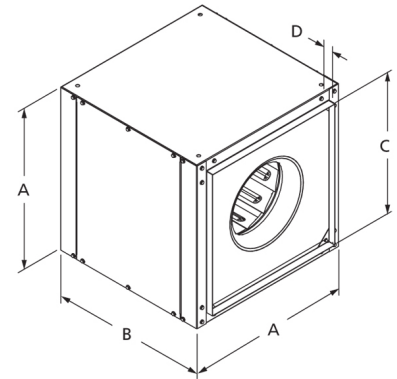


Designed for indoor clean air applications including intake, exhaust, return, or make-up air systems in industrial or commercial buildings. Rugged construction allows fan to be installed in ductwork either horizontally or vertically. Duct collars provide easy duct connections.

- Aluminum backward inclined, nonoverloading centrifugal wheel design
- NEMA 1 junction box included
- Units are speed controllable
- Maximum inlet air temperature: 104° F
- UL/cUL 705 Listed for Power Ventilators

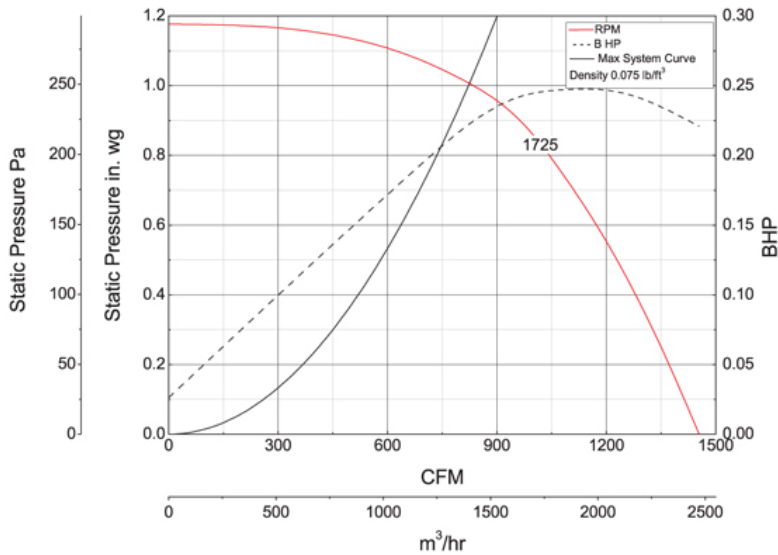


Dayton Electric Mfg. Co. certifies that the blowers shown herein are licensed to bear the AMCA seal. The ratings shown are based on tests and procedures performed in accordance with AMCA Publication 211 and AMCA Publication 311 and comply with the requirements of the AMCA Certified Ratings Program.



A	B	C	D
17 in	21 in	13 7/8 in	1 in

Performance Characteristics



Construction Features

Impeller Diameter (Typ.)	11 in
Impeller Type	Backward Inclined Centrifugal
Impeller Material	Aluminum
Max Inlet Temp	104 °F
Warranty Length	1 Year

Motor Information

Motor Item Number	4YU27
Voltage	115
Hertz (Cycle)	60 Hz
Motor Phase	1
Motor Enclosure	Open Air-Over
RPM	1,725 rpm
Full Load Amps	3.6

Air & Sound Performance

Motor HP	Max BHP	Fan RPM	CFM @	0.000" SP	0.125" SP	0.250" SP	0.375" SP	0.500" SP	0.625" SP	0.750" SP	0.875" SP	1.000" SP
1/4	0.25	1725	CFM	1455	1403	1350	1292	1227	1156	1078	982	831
			Sones	13.1	12.4	11.9	11.5	11.1	10.7	10.4	10.0	9.6

Performance certified is for installation type B: Free inlet, Ducted outlet. Performance ratings do not include the effects of appurtenances (accessories). The sound ratings shown are loudness values in fan sones at 5 ft. (1.5 m) in a hemispherical free field calculated per AMCA Standard 301. Values shown are for installation type B: Free inlet hemispherical fan sone levels.