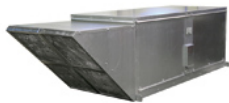


## Direct Fired Make-up Air Heater



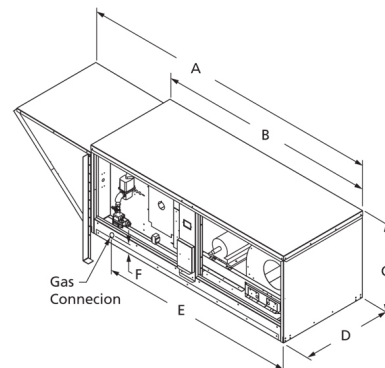
Designed for commercial kitchen applications or industrial buildings with process exhaust. The direct gas burners are 92% efficient and operate on natural gas. Units constructed of 18 gauge galvanized steel with standard lifting lugs for easy installation. Cabinet is lined with 1-inch foil faced insulation, includes a motorized intake damper and weatherhood with washable aluminum air filters.

- Natural gas burners are 92% efficient
- Burners are capable of 25:1 turndown ratio
- Heating capacities of up to 300,000 BtuH



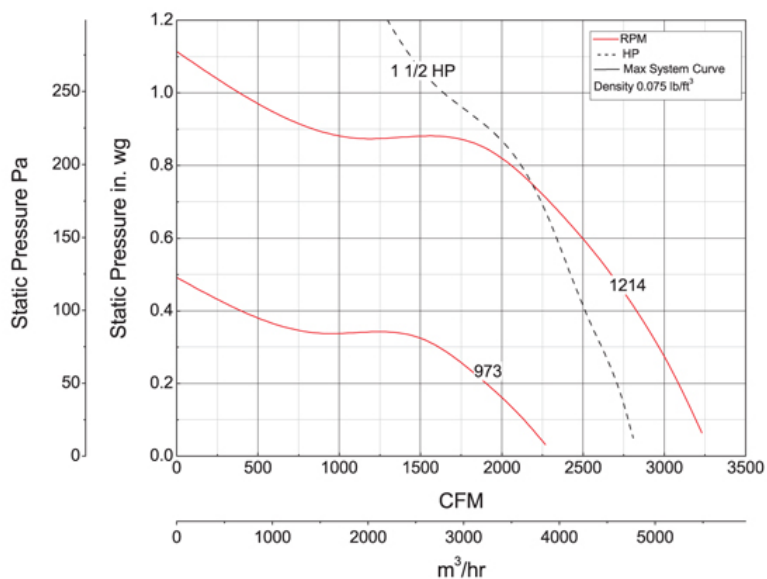
- GREEN Product**
- 92% Efficient Gas Burner
  - Increased Ventilation
  - Meets Minimum & Optimize Energy Performance
  - Meets Minimum IAQ Performance
  - Outdoor Air Delivery Monitoring
  - Thermal Comfort Design

ETL



A	B	C	D	E	F
106 1/8 in	76 1/2 in	29 3/4 in	31 1/2 in	67 1/2 in	2 1/2 in

## Performance Characteristics



## Construction Features

<b>Impeller Type</b>	Backward Inclined Centrifugal
<b>Impeller Material</b>	Steel
<b>Drive Package Description</b>	Drives Assembled
<b>Warranty Length</b>	1 Year

## Motor Information

<b>Motor Item Number</b>	4YU31
<b>Voltage</b>	115/208-230
<b>Hertz (Cycle)</b>	60 Hz
<b>Motor Phase</b>	1
<b>Motor Enclosure</b>	Open Drip Proof
<b>RPM</b>	1,725 rpm
<b>Full Load Amps</b>	13.2/7.2-6.6

## Other Components

Component	Description	Item #
Fan Description	Make-up Air	—
Belt	A42 (QTY: 1)	1A109
Driver Sheave	1VL40x7/8	3X500
Driven Sheave	AK51x3/4	3X786

## Air & Sound Performance

Motor HP	Max BHP	Fan RPM	CFM @	0.250" SP	0.375" SP	0.500" SP	0.625" SP	0.750" SP
1 1/2	0.56	973	CFM	1745	—	—	—	—
			Sones	11.1	—	—	—	—
1 1/2	0.67	999	CFM	1945	—	—	—	—
			Sones	11.6	—	—	—	—
1 1/2	0.80	1030	CFM	2130	1790	—	—	—
			Sones	12.5	—	—	—	—
1 1/2	0.96	1069	CFM	2350	2085	1715	—	—
			Sones	13.9	—	—	—	—
1 1/2	1.21	1105	CFM	2530	2300	2000	—	—
			Sones	15.2	—	—	—	—
1 1/2	1.25	1132	CFM	2660	2450	2200	1850	—
			Sones	16.2	—	—	—	—
1 1/2	1.43	1170	CFM	2830	2650	2425	2145	—
			Sones	17.5	—	—	—	—
1 1/2	1.50	1182	CFM	2885	2710	2595	2235	1895
			Sones	17.8	—	—	—	—
1 1/2	1.67	1214	CFM	3026	2863	2675	2445	2150
			Sones	19.1	—	—	—	—