



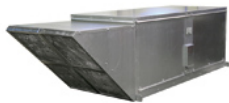
Stock No.
3CCR8

Job Name:
Mark:

Submitted By:
Date:6/9/2026

Power Roof Ventilators

Direct Fired Make-up Air Heater



Designed for commercial kitchen applications or industrial buildings with process exhaust. The direct gas burners are 92% efficient and operate on natural gas. Units constructed of 18 gauge galvanized steel with standard lifting lugs for easy installation. Cabinet is lined with 1-inch foil faced insulation, includes a motorized intake damper and weatherhood with washable aluminum air filters.

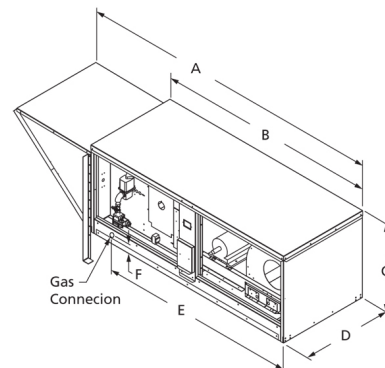
- Natural gas burners are 92% efficient
- Burners are capable of 25:1 turndown ratio
- Heating capacities of up to 800,000 BtuH



GREEN Product

- 92% Efficient Gas Burner
- Increased Ventilation
- Meets Minimum & Optimize Energy Performance
- Meets Minimum IAQ Performance
- Outdoor Air Delivery Monitoring
- Thermal Comfort Design

ETL



A	B	C	D	E	F
136 1/4 in	88 1/16 in	39 in	49 1/2 in	64 1/16 in	2 15/16 in

Performance Characteristics

No Fan Curve Available.

Construction Features

Impeller Type	Backward Inclined Centrifugal
Impeller Material	Steel
Drive Package Description	Drives Assembled
Warranty Length	1 Year

Motor Information

Motor Item Number	53J909
Voltage	208-230/460
Hertz (Cycle)	60 Hz
Motor Phase	3
Motor Enclosure	Open Drip Proof
RPM	1,725 rpm
Full Load Amps	

Other Components

Component	Description	Item #
Fan Description	Make-up Air	—
Belt	B74 (QTY: 1)	6A158
Driver Sheave	1VP65X1-1/8	2L478
Driven Sheave	BK115QT	5RJG3
Driven Bushing	QTx1	5UHZ2

Air & Sound Performance

Motor HP	Max BHP	Fan RPM	CFM @	0.250" SP	0.375" SP	0.500" SP	0.625" SP	0.750" SP	0.875" SP	1.000" SP
5	2.84	858	CFM	5465	5080	4610	4100	—	—	—
			Sones	22.5	—	—	—	—	—	
5	3.07	874	CFM	5665	5600	4850	4390	—	—	—
			Sones	24.0	—	—	—	—	—	
5	3.29	890	CFM	5850	5500	5100	4630	4050	—	—
			Sones	25.5	—	—	—	—	—	
5	3.55	906	CFM	6055	5710	5350	4900	4430	—	—
			Sones	27.1	—	—	—	—	—	
5	3.71	921	CFM	6245	5900	5540	5110	4675	—	—
			Sones	28.7	—	—	—	—	—	
5	4.07	937	CFM	6430	3090	5750	5350	4920	4425	—
			Sones	30.3	—	—	—	—	—	
5	4.35	953	CFM	6615	6290	5950	5590	5160	4730	—
			Sones	32.1	—	—	—	—	—	
5	4.61	968	CFM	6780	6470	6140	5810	5400	4970	4400
			Sones	33.7	—	—	—	—	—	