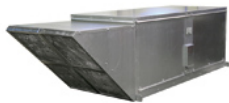


## Direct Fired Make-up Air Heater



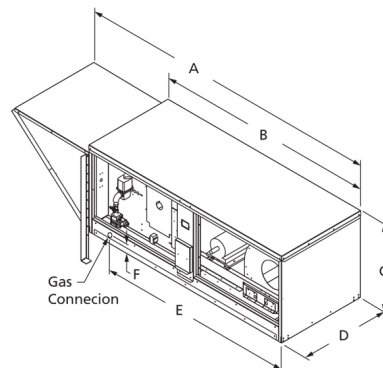
Designed for commercial kitchen applications or industrial buildings with process exhaust. The direct gas burners are 92% efficient and operate on natural gas. Units constructed of 18 gauge galvanized steel with standard lifting lugs for easy installation. Cabinet is lined with 1-inch foil faced insulation, includes a motorized intake damper and weatherhood with washable aluminum air filters.

- Natural gas burners are 92% efficient
- Burners are capable of 25:1 turndown ratio
- Heating capacities of up to 800,000 BtuH



- GREEN Product**
- 92% Efficient Gas Burner
  - Increased Ventilation
  - Meets Minimum & Optimize Energy Performance
  - Meets Minimum IAQ Performance
  - Outdoor Air Delivery Monitoring
  - Thermal Comfort Design

ETL



A	B	C	D	E	F
136 1/4 in	88 1/16 in	39 in	49 1/2 in	64 1/16 in	2 15/16 in

### Performance Characteristics

No Fan Curve Available.

### Construction Features

<b>Impeller Type</b>	Backward Inclined Centrifugal
<b>Impeller Material</b>	Steel
<b>Drive Package Description</b>	Drives Assembled
<b>Warranty Length</b>	1 Year

### Motor Information

<b>Motor Item Number</b>	53J909
<b>Voltage</b>	208-230/460
<b>Hertz (Cycle)</b>	60 Hz
<b>Motor Phase</b>	3
<b>Motor Enclosure</b>	Open Drip Proof
<b>RPM</b>	1,725 rpm
<b>Full Load Amps</b>	

### Other Components

Component	Description	Item #
Fan Description	Make-up Air	—
Belt	BX84 (QTY: 1)	—
Driver Sheave	1VP56X1-1/8	3X946
Driven Sheave	BK120x1	—

### Air & Sound Performance

Motor HP	Max BHP	Fan RPM	CFM @	0.250" SP	0.375" SP	0.500" SP	0.625" SP	0.750" SP	0.875" SP
5	3.08	727	CFM	6910	6330	5710	—	—	—
			Sones	18.5	—	—	—	—	
5	3.37	742	CFM	7200	6670	6060	5230	—	—
			Sones	19.9	—	—	—	—	
5	3.66	757	CFM	7470	6980	6400	5760	—	—
			Sones	21.0	—	—	—	—	
5	3.98	772	CFM	7750	7300	6750	6160	—	—
			Sones	22.2	—	—	—	—	
5	4.29	787	CFM	8015	7580	7070	6500	5800	—
			Sones	23.3	—	—	—	—	
5	4.63	802	CFM	8270	7850	7400	6850	6280	—
			Sones	24.5	—	—	—	—	
5	4.98	817	CFM	8530	8120	7700	7180	6620	5900
			Sones	25.5	—	—	—	—	—
5	5.35	832	CFM	8790	8400	8070	7500	6970	6400
			Sones	26.8	—	—	—	—	—