

Utility Exhaust Belt-Drive Blower

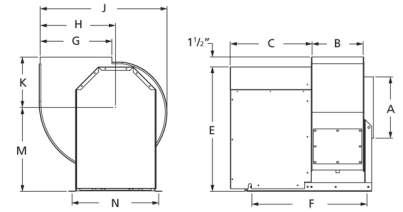


Designed for commercial kitchen exhaust or industrial spark resistant applications requiring high volumes of air at high static pressures. Suitable for ducted exhaust, supply or return-air applications. Constructed out of heavy gauge steel with polyester gray coating. The scroll is welded, has a bolted access door and 1 inch threaded drain connection for easy cleaning.

- Maximum inlet air temperature: 300° F
- UL/cUL 762 Listed for Restaurant Exhaust Appliances
- Polyester gray coating
- Backward incline nonoverloading aluminum wheel
- Aluminum rub ring
- Bolted access door

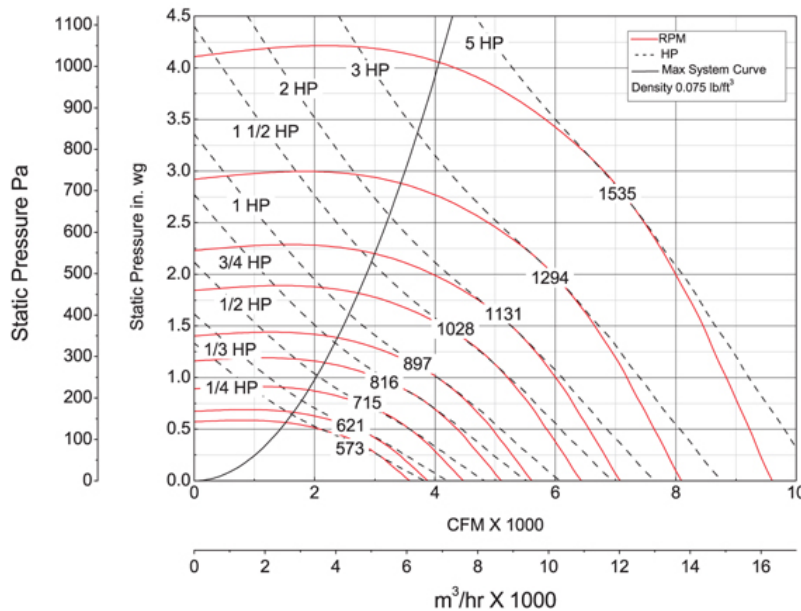


Dayton Electric Mfg. Co. certifies that the blowers shown herein are licensed to bear the AMCA seal. The ratings shown are based on tests and procedures performed in accordance with AMCA Publication 211 and comply with the requirements of the AMCA Certified Ratings Program.



A	B	C	E	F	G
23 in	17 in	24 in	41 1/2 in	34 1/8 in	23 1/2 in
H	J	K	M	N	
23 3/4 in	41 7/16 in	16 1/4 in	28 3/4 in	28 1/4 in	

Performance Characteristics



Construction Features

Impeller Diameter (Typ.)	22 1/8 in
Impeller Type	Backward Inclined Centrifugal
Impeller Material	Aluminum
Max Inlet Temp	300 °F
Bearing Type	Ball
Drive Package Description	Drives By Others
Warranty Length	1 Year

Air & Sound Performance

Motor HP	Max BHP	Fan RPM	CFM @	0.000" SP	0.125" SP	0.250" SP	0.375" SP	0.500" SP	0.625" SP	0.750" SP	0.875" SP	1.000" SP	1.250" SP	1.500" SP	1.750" SP	2.000" SP	2.250" SP	2.500" SP	2.750" SP	3.000" SP
1/4	0.25	573	CFM	3585	3329	3057	2695	2063	—	—	—	—	—	—	—	—	—	—	—	—
			Sones	9.8	9.4	8.9	8.8	9.1	—	—	—	—	—	—	—	—	—	—	—	—
1/3	0.33	621	CFM	3886	3649	3409	3119	2707	2000	—	—	—	—	—	—	—	—	—	—	—
			Sones	10.5	10.0	9.6	9.1	9.3	9.3	—	—	—	—	—	—	—	—	—	—	—
1/2	0.50	715	CFM	4474	4269	4059	3842	3584	3253	2730	—	—	—	—	—	—	—	—	—	—
			Sones	12.0	11.5	11.0	10.6	10.1	10.1	10.3	—	—	—	—	—	—	—	—	—	—
3/4	0.75	816	CFM	5106	4927	4746	4564	4365	4142	3862	3519	3005	—	—	—	—	—	—	—	—
			Sones	14.4	13.9	13.4	12.9	12.4	12.0	11.6	11.4	11.3	—	—	—	—	—	—	—	—
1	1.00	897	CFM	5613	5447	5285	5119	4958	4766	4563	4312	4039	3123	—	—	—	—	—	—	—
			Sones	16.0	15.5	15.0	14.6	14.2	13.7	13.3	12.9	12.7	12.6	—	—	—	—	—	—	—
1 1/2	1.50	1028	CFM	6432	6283	6147	6004	5857	5717	5557	5387	5206	4755	4115	3003	—	—	—	—	—
			Sones	18.7	18.2	17.8	17.4	17.0	16.7	16.3	15.9	15.5	14.8	14.5	15.2	—	—	—	—	—
2	2.00	1131	CFM	7077	6939	6819	6687	6558	6421	6296	6154	6002	5671	5253	4714	3894	—	—	—	—
			Sones	21.0	21.0	20.0	19.9	19.6	19.2	18.8	18.5	18.1	17.5	16.7	16.3	16.7	—	—	—	—
3	3.00	1294	CFM	8097	7976	7866	7757	7642	7529	7415	7297	7188	6929	6653	6326	5956	5477	4809	4059	—
			Sones	26.0	25.0	25.0	25.0	24.0	24.0	23.0	23.0	23.0	22.0	22.0	21.0	21.0	21.0	21.0	21.0	22.0
5	5.00	1535	CFM	9605	9503	9402	9315	9224	9127	9030	8935	8841	8642	8452	8228	7998	7752	7457	7146	6788
			Sones	33.0	33.0	33.0	32.0	32.0	31.0	31.0	30.0	30.0	29.0	29.0	28.0	28.0	28.0	27.0	27.0	27.0

Performance certified is for installation type B: Free inlet, Ducted outlet. Power rating (BHP) does not include transmission losses. Performance ratings do not include the effects of appurtenances (accessories). The AMCA Certified ratings Seal applies to air performance ratings only.