

## Utility Exhaust Direct-Drive Blower



Designed for industrial spark resistant applications requiring high volumes of air at high static pressures. Constructed out of heavy gauge steel with polyester gray coating. Scroll is clockwise rotation and can be rotated in 45° increments to 8 positions (shipped in upblast position). Includes weatherhood and a bolted access door located on the scroll. Features electronically commutated (EC) motor, providing up to 60% energy savings. Potentiometer dial on motor allows speed control down to 80%. Optional speed control kit No. 43Y140 allows the user to manually adjust a fan's speed from a remote location and mounts to a wall using a 2x4 junction box. For internal or external mounting.

- Maximum inlet air temperature: 180° F
- UL/cUL 705 Listed for Power Ventilators
- Polyester gray coating
- Backward incline nonoverloading aluminum wheel
- Aluminum rub ring
- Bolted access door



**GREEN Product**

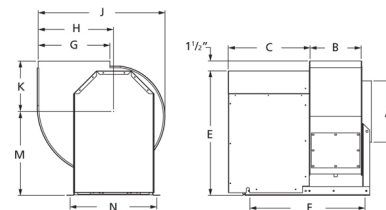
- Variable Speed capable of 80% turn down at a minimum of 85% efficiency at all speeds
- Reduce Energy Consumption

AMCA Air



Dayton Electric Mfg. Co. certifies that the blowers shown herein are licensed to bear the AMCA seal. The ratings shown are based on tests and procedures performed in accordance with AMCA Publication 211 and comply with the requirements of the AMCA Certified Ratings Program.

UL/cUL 705



A	B	C	E	F	G
15 7/8 in	11 5/8 in	13 3/4 in	28 5/8 in	24 1/2 in	15 3/4 in
H	J	K	M	N	
16 1/4 in	28 3/8 in	11 1/2 in	18 1/2 in	20 in	

### Performance Characteristics

No Fan Curve Available.

### Construction Features

<b>Impeller Diameter (Typ.)</b>	14 3/4 in
<b>Impeller Type</b>	Backward Inclined Centrifugal
<b>Impeller Material</b>	Aluminum
<b>Max Inlet Temp</b>	180 °F
<b>Warranty Length</b>	1 Year

### Motor Information

<b>Motor Item Number</b>	43Y138
<b>Voltage</b>	115
<b>Hertz (Cycle)</b>	60 Hz
<b>Motor Phase</b>	1
<b>Motor Enclosure</b>	Open
<b>RPM</b>	rpm
<b>Full Load Amps</b>	10.6

### Air & Sound Performance

Motor HP	Max BHP	Fan RPM	CFM @	0.250" SP	0.500" SP	0.750" SP	1.000" SP
3/4	—	700	CFM	909	—	—	—
			Sones	—	—	—	—
3/4	—	1050	CFM	1698	1433	1150	—
			Sones	—	—	7.9	—
3/4	—	1400	CFM	2412	2224	2027	1818
			Sones	—	—	12.5	—

Performance certified is for installation type B: Free inlet, Ducted outlet. Power rating (BHP) does not include transmission losses. Performance ratings do not include the effects of appurtenances (accessories). The AMCA Certified ratings Seal applies to air performance ratings only.