

Utility Exhaust Belt-Drive Blower

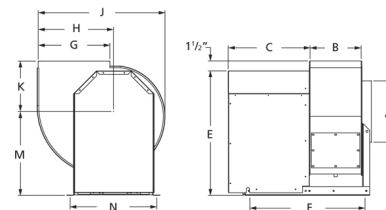


Designed for commercial kitchen exhaust or industrial spark resistant applications requiring high volumes of air at high static pressures. Suitable for ducted exhaust, supply or return-air applications. Constructed out of heavy gauge steel with polyester gray coating. The scroll is welded, has a bolted access door and 1 inch threaded drain connection for easy cleaning.

- Maximum inlet air temperature: 300° F
- UL/cUL 762 Listed for Restaurant Exhaust Appliances
- Polyester gray coating
- Backward incline nonoverloading aluminum wheel
- Aluminum rub ring
- Bolted access door



Dayton Electric Mfg. Co. certifies that the blowers shown herein are licensed to bear the AMCA seal. The ratings shown are based on tests and procedures performed in accordance with AMCA Publication 211 and comply with the requirements of the AMCA Certified Ratings Program.

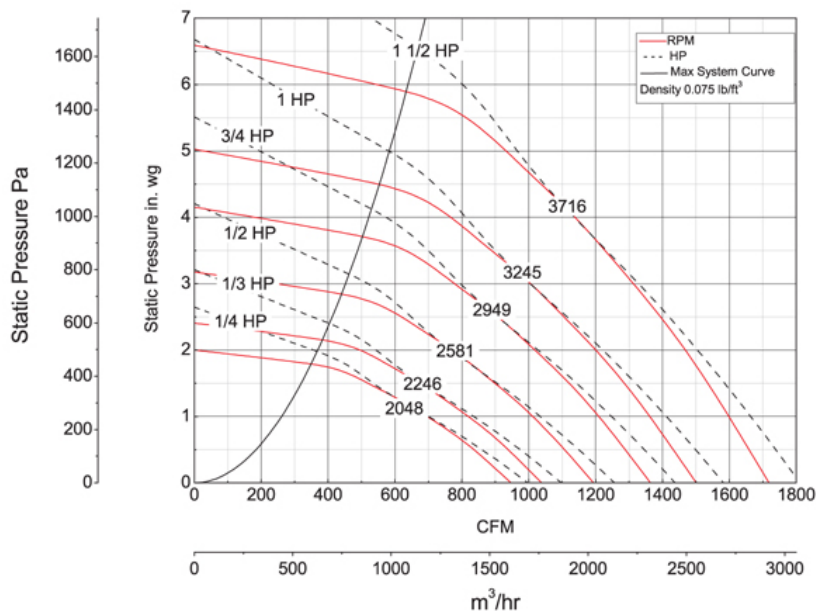


A	B	C	E	F	G
11 in	8 1/4 in	15 1/2 in	22 1/4 in	20 3/8 in	11 1/4 in
H	J	K	M	N	
11 1/2 in	20 1/8 in	8 5/8 in	15 1/8 in	16 in	

Performance Characteristics

Construction Features

Impeller Diameter (Typ.)	11 1/8 in
Impeller Type	Backward Inclined Centrifugal
Impeller Material	Aluminum
Max Inlet Temp	300 °F
Bearing Type	Ball
Drive Package Description	Drives By Others
Warranty Length	1 Year



Air & Sound Performance

Motor HP	Max BHP	Fan RPM	CFM @	0.000" SP	0.125" SP	0.250" SP	0.375" SP	0.500" SP	0.625" SP	0.750" SP	0.875" SP	1.000" SP	1.250" SP	1.500" SP	1.750" SP	2.000" SP	2.250" SP	2.500" SP	2.750" SP	3.000" SP
1/4	0.25	2048	CFM	947	920	893	864	836	804	771	734	696	614	518	375	—	—	—	—	—
			Sones	13.3	13.9	13.5	13.3	13.3	13.2	13.0	12.8	12.5	12.0	11.5	11.9	—	—	—	—	—
1/3	0.33	2246	CFM	1039	1014	989	964	938	911	882	852	819	750	674	589	494	—	—	—	—
			Sones	14.5	16.1	15.1	14.9	14.7	14.6	14.4	14.1	13.6	13.2	12.6	12.0	—	—	—	—	—
1/2	0.50	2581	CFM	1194	1172	1151	1129	1106	1084	1061	1037	1011	958	899	836	769	696	614	494	—
			Sones	16.9	20.0	20.0	17.9	17.8	17.7	17.5	17.5	17.3	16.9	16.4	15.8	15.3	14.9	14.7	14.7	—
3/4	0.75	2949	CFM	1364	1345	1326	1307	1288	1269	1249	1229	1209	1165	1121	1070	1018	963	908	843	778
			Sones	20.0	25.0	29.0	25.0	22.0	22.0	22.0	21.0	21.0	21.0	21.0	21.0	20.0	19.6	19.0	18.5	18.0
1	1.00	3245	CFM	1501	1484	1467	1449	1432	1415	1397	1379	1361	1325	1284	1244	1199	1153	1105	1055	1005
			Sones	23.0	27.0	29.0	29.0	25.0	24.0	24.0	24.0	25.0	26.0	24.0	24.0	23.0	23.0	23.0	21.0	20.0
1 1/2	1.47	3716	CFM	1719	1704	1689	1674	1659	1644	1629	1613	1598	1566	1535	1502	1466	1431	1394	1353	1312
			Sones	29.0	30.0	30.0	31.0	30.0	28.0	27.0	28.0	30.0	35.0	31.0	29.0	29.0	28.0	28.0	28.0	28.0

Performance certified is for installation type B: Free inlet, Ducted outlet. Power rating (BHP) does not include transmission losses. Performance ratings do not include the effects of appurtenances (accessories). The AMCA Certified ratings Seal applies to air performance ratings only.