

**Utility Exhaust Belt-Drive Blower**

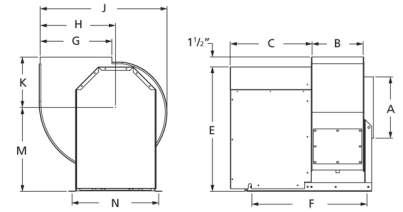


Designed for commercial kitchen exhaust or industrial spark resistant applications requiring high volumes of air at high static pressures. Suitable for ducted exhaust, supply or return-air applications. Constructed out of heavy gauge steel with polyester gray coating. The scroll is welded, has a bolted access door and 1 inch threaded drain connection for easy cleaning.

- Maximum inlet air temperature: 300° F
- UL/cUL 762 Listed for Restaurant Exhaust Appliances
- Polyester gray coating
- Backward incline nonoverloading aluminum wheel
- Aluminum rub ring
- Bolted access door

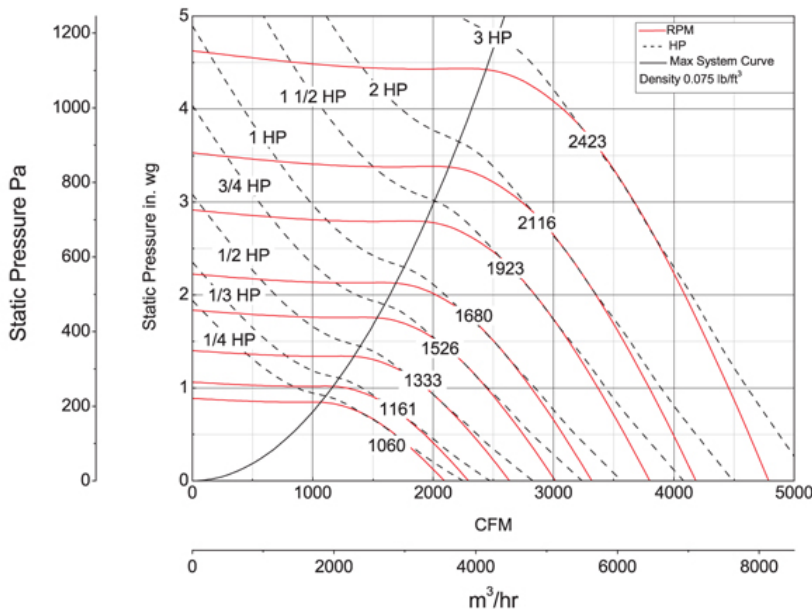


Dayton Electric Mfg. Co. certifies that the blowers shown herein are licensed to bear the AMCA seal. The ratings shown are based on tests and procedures performed in accordance with AMCA Publication 211 and comply with the requirements of the AMCA Certified Ratings Program.



<b>A</b>	<b>B</b>	<b>C</b>	<b>E</b>	<b>F</b>	<b>G</b>
15 7/8 in	11 5/8 in	18 1/2 in	27 1/2 in	24 1/8 in	15 3/4 in
<b>H</b>	<b>J</b>	<b>K</b>	<b>M</b>	<b>N</b>	
16 1/4 in	28 3/8 in	11 5/8 in	18 1/2 in	20 in	

**Performance Characteristics**



**Construction Features**

<b>Impeller Diameter (Typ.)</b>	15 in
<b>Impeller Type</b>	Backward Inclined Centrifugal
<b>Impeller Material</b>	Aluminum
<b>Max Inlet Temp</b>	300 °F
<b>Bearing Type</b>	Ball
<b>Drive Package Description</b>	Drives By Others
<b>Warranty Length</b>	1 Year

**Air & Sound Performance**

Motor HP	Max BHP	Fan RPM	CFM @	0.000" SP	0.125" SP	0.250" SP	0.375" SP	0.500" SP	0.625" SP	0.750" SP	0.875" SP	1.000" SP	1.250" SP	1.500" SP	1.750" SP	2.000" SP	2.250" SP	2.500" SP	2.750" SP	3.000" SP
1/4	0.25	1060	CFM	2095	2000	1902	1796	1681	1547	1373	—	—	—	—	—	—	—	—	—	—
			Sones	9.9	9.6	9.3	9.0	8.7	8.4	8.0	—	—	—	—	—	—	—	—	—	—
1/3	0.33	1161	CFM	2295	2208	2119	2025	1926	1820	1694	1546	1268	—	—	—	—	—	—	—	—
			Sones	11.1	10.8	10.4	10.1	9.8	9.6	9.3	9.0	8.6	—	—	—	—	—	—	—	—
1/2	0.50	1333	CFM	2634	2559	2483	2404	2322	2236	2144	2046	1933	1613	—	—	—	—	—	—	—
			Sones	13.4	13.1	12.7	12.3	12.0	11.7	11.5	11.2	11.0	10.3	—	—	—	—	—	—	—
3/4	0.75	1526	CFM	3016	2950	2885	2817	2748	2676	2602	2524	2443	2267	2044	—	—	—	—	—	—
			Sones	16.1	15.8	15.5	15.1	14.8	14.5	14.3	14.1	13.9	13.6	13.0	—	—	—	—	—	—
1	1.00	1680	CFM	3320	3261	3201	3141	3078	3015	2950	2883	2814	2668	2506	2306	2007	—	—	—	—
			Sones	18.8	18.5	18.2	17.9	17.6	17.3	17.0	16.8	16.6	16.2	15.9	15.4	14.7	—	—	—	—
1 1/2	1.50	1923	CFM	3801	3748	3696	3644	3591	3537	3482	3427	3368	3252	3124	2993	2847	2669	2458	2090	—
			Sones	22.0	22.0	21.0	21.0	21.0	21.0	20.0	20.0	19.8	19.5	19.2	18.8	18.4	17.9	17.4	16.9	—
2	2.00	2116	CFM	4182	4135	4087	4040	3993	3944	3894	3844	3794	3690	3584	3468	3352	3225	3082	2921	2730
			Sones	25.0	24.0	24.0	24.0	24.0	23.0	23.0	23.0	23.0	23.0	22.0	22.0	22.0	21.0	20.0	20.0	19.5
3	3.00	2423	CFM	4789	4747	4706	4665	4623	4582	4540	4497	4453	4366	4277	4184	4091	3989	3888	3785	3670
			Sones	30.0	30.0	30.0	29.0	29.0	29.0	29.0	29.0	28.0	28.0	28.0	27.0	27.0	27.0	26.0	26.0	25.0

Performance certified is for installation type B: Free inlet, Ducted outlet. Power rating (BHP) does not include transmission losses. Performance ratings do not include the effects of appurtenances (accessories). The AMCA Certified ratings Seal applies to air performance ratings only.