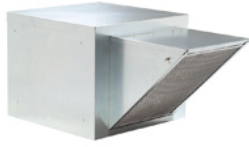


## Centrifugal Belt-Drive Filtered Supply Ventilator



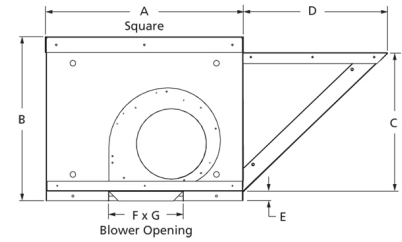
Designed to supply untempered filtered make-up air to commercial and institutional buildings or in commercial kitchen applications. Units are constructed of heavy gauge galvanized steel. Neoprene isolators minimize vibration and noise.

- Lifting lugs on drive frame
- Maximum inlet air temperature: 120° F
- NEMA 1 junction box located in motor enclosure
- Optional NEMA 1 and 4 disconnects available
- Sealed pillow block bearings
- UL/cUL 705 Listed for Power Ventilators
- Air handling quality bearings meet minimum of L10-100,000 hours



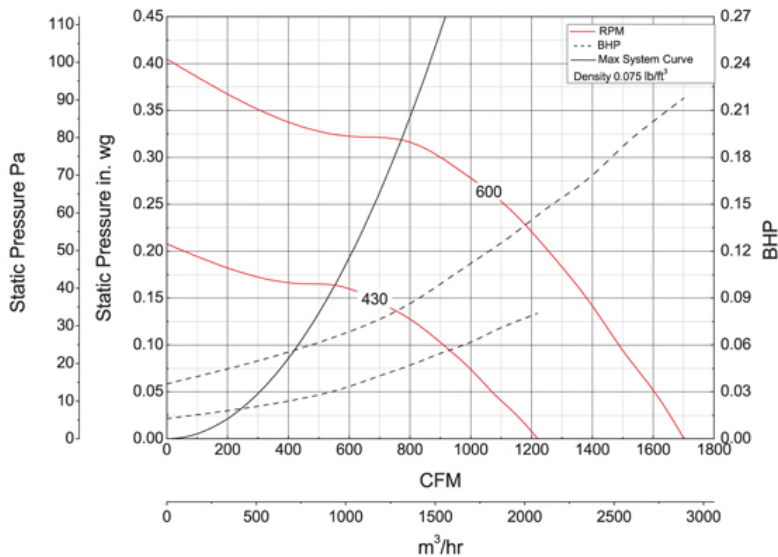
Dayton Electric Mfg. Co. certifies that the ventilators shown herein are licensed to bear the AMCA seal. The ratings shown are based on tests and procedures performed in accordance with AMCA Publication 211 and AMCA Publication 311 and comply with the requirements of the AMCA Certified Ratings Program.

UL/cUL 705



A	B	C	D	E	F
30 in	25 in	21 1/4 in	22 in	1 1/2 in	11 3/8 in
G					
13 3/8 in					

## Performance Characteristics



## Construction Features

<b>Impeller Diameter (Typ.)</b>	11 1/8 in
<b>Impeller Type</b>	Forward Curved Centrifugal
<b>Impeller Material</b>	Steel
<b>Max Inlet Temp</b>	120 °F
<b>Bearing Type</b>	Sealed Pillow Block
<b>Drive Package Description</b>	Drives Packaged Separately
<b>Warranty Length</b>	1 Year

## Motor Information

<b>Motor Item Number</b>	3K613
<b>Voltage</b>	115/208-230
<b>Hertz (Cycle)</b>	60 Hz
<b>Motor Phase</b>	1
<b>Motor Enclosure</b>	Open Drip Proof
<b>RPM</b>	1,725 rpm
<b>Full Load Amps</b>	3.6/1.6-1.8

## Other Components

Component	Description	Item #
Fan Description	Supply Fan	4YC82
Belt	4L460 (QTY: 1)	4L460
Driver Sheave	1VP3412	5UHP9
Driven Sheave	AK9434	5RJF7

## Air & Sound Performance

Motor HP	Max BHP	Fan RPM	CFM @	0.000" SP	0.125" SP	0.250" SP
1/6	0.18	600	CFM	1702	1435	1106
			Sones	12.8	11.5	11.3

Performance certified is for installation type A: Free inlet, Free outlet. Power rating (BHP) does not include transmission losses. Performance ratings include the effects of a filter in the airstream. The sound ratings shown are loudness values in fan sones at 5 ft. (1.5 m) in a hemispherical free field calculated per AMCA Standard 301. Values shown are for installation type A: Free inlet fan sone levels.

Catalog 405, January 2010

## Operating Range of Drive Package

Turns Open	FRPM @ 0 TO	FRPM @ 1/2 TO	FRPM @ 1 TO	FRPM @ 1 1/2 TO	FRPM @ 2 TO	FRPM @ 2 1/2 TO	FRPM @ 3 TO	FRPM @ 3 1/2 TO	FRPM @ 4 TO	FRPM @ 4 1/2 TO	FRPM @ 5 TO
Approx. FRPM	600	589	569	549	529	509	490	470	450	430	—